

# arts life

Calendar of arts, culture & events in Monash



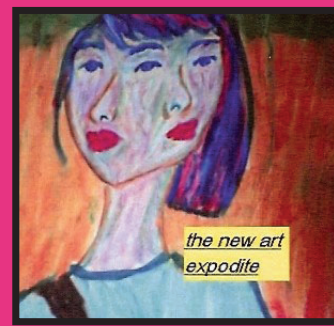
Exhibitions

**Monash Gallery of Art presents Brutal, Tender, Human, Animal: Roger Ballen photography**  
Presenting photographs from 1983 to 2006, this internationally renowned photographer presents us with compelling psychological drama's that strike at the heart of what it means to be human. Proudly supported by Wesfarmers Arts – Principal Partner and 303, The Sunday Times, IFAC, Channel Seven Perth, Mirvac Hotels & Resorts and Ernst & Young.  
2 September – 1 November  
MGA 860 Ferntree Gully Road  
Wheeler's Hill  
Tuesday – Friday 10am – 5pm  
Saturday – Sunday 12pm – 5pm  
Monday/public holidays closed  
www.mga.org.au  
☎ 9562 1569

**Monash Gallery of Art presents 2009 William and Winifred Bowness Photography Prize**  
The annual William and Winifred Bowness Photography Prize is one of Australia's most prestigious awards. This year \$20,000 will be

awarded for a photographic work by an Australian artist completed in the last year. The prize is non-acquisitive.  
2 September – 1 November  
MGA 860 Ferntree Gully Road  
Wheeler's Hill  
www.mga.org.au  
☎ 9562 1569

**The Highway Gallery presents Artist, Passion & The Orient - A story told by The One Who Does Not Exist**  
Paintings, sculpture, video and sound tell stories of the characters and locations of Watermelon Man, Octopus Man and others. Created by international street performer, Frank Barresi.  
4 – 17 September  
Tuesday to Saturday  
11am – 5pm,  
Sundays 1pm – 5pm  
Closed Mondays  
Highway Gallery  
14 The Highway, Mt Waverley  
www.highwaygallery.com.au  
☎ 9807 7261



2faces

**Waverley Arts Society Inc presents the 39th Annual Art Show**  
Exhibition and sale of fine art, sculpture, and textile art. Prize winning artists' latest works in mediums for sale.  
Glen Waverley Secondary College  
O'Sullivan Rd, Glen Waverley  
Friday 2 October  
7.30pm – 9.30pm (Opening night)  
3 October, 9am – 5pm  
5 October, 10am – 4pm  
www.waverleyarts.com.au  
☎ 9723 5330

**The Highway Gallery presents The Fantasy Revealed: Felt, Fibres, Beads & Paints**  
Wonderfully colourful and tactile art through fabrics by Tereza Koucoulidis, Christie Duke & Vaseliki Gavras  
16 – 29 October  
Tuesday to Saturday  
11am – 5pm  
Sundays 1pm – 5pm  
Closed Mondays  
Highway Gallery  
14 The Highway, Mt Waverley  
www.highwaygallery.com.au  
☎ 9807 7261

**The Highway Gallery presents A Flurry of Colour**  
Vibrant paintings by Camilla Vascon exhibited at the Highway Gallery of Mt Waverley  
13 – 26 November  
Tuesday to Saturday 11am – 5pm  
Sundays 1pm – 5pm  
Closed Mondays  
Highway Gallery  
14 The Highway, Mt Waverley  
www.highwaygallery.com.au  
☎ 9807 7261

Literary

**School Holiday Program**  
Not sure what to do with the kids this school holidays?  
Monash Public Library service offers a range of free or low cost activities for primary school aged children. Dates and times to be confirmed.  
For further details visit [www.monlib.vic.gov.au](http://www.monlib.vic.gov.au)  
☎ 9544 0668

Music & Theatre

**Rhapsody**  
As part of the Monash University Open Day celebrations for 2009 the Monash Academy Orchestra directed by Jeffrey Crellin performs a special afternoon concert.  
Sunday 2 August, 3pm  
Robert Blackwood Hall  
Monash University, Clayton  
www.monash.edu.au/monart  
☎ 9905 1111

**Lysistrata**  
Monash University Academy of Performing presents Aristophanes' 'Lysistrata' which battles its way through love, sex and war.  
13 – 15 August  
Alexander Theatre  
Monash University, Clayton  
www.monash.edu.au/monart  
☎ 9905 1111

**Music Alive Annual Concert Series**  
Enjoy good time rock and roll with vocal performances from Jimmy

Swing, occasional audience sing along and dancing in the aisles!  
17 – 20 September, 7pm – 11pm  
Highschool Secondary College  
33 Springvale Rd, Glen Waverley  
www.musicalive.com  
☎ 9999 0345

**Blue Lagoon Polynesian Arts - Polynesian Cultural Performance**  
Traditional songs, island music, Polynesian dances, traditional costumes, live bands, wooden log Tokere (drumming).  
Saturday 26 September, 7.30pm  
☎ 0431 670 005

**Encore Theatre Company presents 'Wit'**  
Pulitzer prize-winning play by Margaret Edson  
9, 10, 16, 17, 22, 23 and 24 October, 8pm – 11pm and 18 October, 2.15pm  
Clayton Community Centre  
Theatrette  
Cooke Street, Clayton  
www.encoretheatre.com.au  
☎ 1300 739 099

**Monash Concert Band presents an Afternoon at the Proms**  
Together with Bands of the Army Reserve, MCB presents a Proms Concert with all you could wish for. Great music! Wonderful occasion! Not to be missed!  
25 October, 2pm – 5pm  
Robert Blackwood Hall  
Building 2 Monash University  
Wellington Road, Clayton  
www.monash.edu.au/monart  
☎ 9905 1111

**Peridot Theatre presents 'Separate Tables' by Terence Rattigan**  
Classic and much-loved English comedy/drama about the lives of residents of a private hotel in Bournemouth, England  
6 – 21 November, 8.15pm  
8 & 14 November, 2.15pm  
Unicorn Theatre  
Lechte Road, Mt Waverley  
www.peridot.com.au  
☎ Bookings 1300 138 645 or 9898 9090

**The School for Scandal**  
Richard Brinsley Sheridan's classic comedy of manners satirises the behaviours and affections of the wealthy in the high society of 1940s Hollywood.  
19, 20, 21, 25, 26, 27, 28 November 2, 3, 4 December, 8pm  
21, 29 November, 2pm  
Ashwood Performing Arts Centre, Vannam Drive Ashwood  
hartwellplayers.org.au  
☎ 9889 5006

**Monash Chorale presents the Christmas Concert**  
Monash Chorale, under conductor Jennifer Turner, will be joined by guest organist, trumpet and vocal soloists, to perform Handel's oratorio, Messiah.  
Sunday 6 December, 3pm  
St Stephen's and St Mary's Anglican Church  
High Street Road, Mt Waverley  
home.vicnet.net.au/~monchor/  
☎ 9807 9624

Events & Festivals

**Zooming in: artist talk with Louis Porter**  
Join Louis Porter as he discusses his work on display and the work of photographers in documenting suburbia.  
Thursday 3 September, 3pm  
MGA, 860 Ferntree Gully Rd  
Wheeler's Hill  
mga.org.au  
☎ 95621569

**Waverley Music Eisteddfod Showcase Concert**  
The finale of the Waverley Music Eisteddfod featuring the winners in a variety of instrumental and vocal performances.  
Sunday 13 September  
3pm - 5pm Bookings essential  
Monash Council Civic Centre  
Bookings 7 – 11 September  
(9am - 5pm or until booked out)  
☎ 9518 3636 TTY: 9518 3655  
www.monash.vic.gov.au/macd

**Waverley Gem Club presents its Annual Gemcraft – Mineral Show Demonstrations & Sales**  
Search for bargains at trader & club stalls, for all ages, demonstrations of lapidary arts, club displays, enjoy a Devonshire tea, soup, cakes etc.  
19 & 20 September, 10am – 5pm  
Brandon Park Community Centre  
645 Ferntree Gully Road  
Glen Waverley  
www.waverlygemclub.com  
☎ 9808 7510

**Art Demonstration in Oils**  
Charles Moodie will demonstrate a landscape in oils for the group. Visitors are most welcome to enjoy the demonstration of this most popular artist.  
Wednesday 23 September, 7.45pm  
Hughesdale Community Hall  
Cnr. Kangaroo and Poath Roads, Hughesdale (Mel ref 69C7)  
mc2.vicnet.net.au/home/hagroup/web/index.html  
☎ 9568 8396

**Oakleigh Movie Club Inc presents The 42nd Melbourne International Movie Festival**  
Award Winning short movies from the world's leading Non Professional Movie Makers.  
Saturday 10 October  
2.30pm & 8pm  
Waverley Masonic Centre  
318 Stephenson's Road  
Mt Waverley  
www.mimf.oakleighmovieclub.org.au  
☎ 9785 6747

**Babes in Arms**  
Every two months MGA opens its doors on a Monday and invites parents, carers and their children to enjoy our exhibition spaces in their own particular way. Begin with storytime in the Library then meet for morning tea and a short guided tour at MGA.  
Bookings essential  
MGA & Wheeler's Hill Library

Monday 12 October, 10.30 – 11.15am  
Storytime in the Library  
11.15 – 12.00pm  
Morning tea at MGA with an introductory talk at 11.40am  
mga.org.au  
☎ 95621569

**City of Monash presents the Ashwood-Chadstone Family Fun Day**  
Join in with live entertainment, free kids activities, food and community information stalls at the annual family fun day.  
Sunday 18 October, 11am – 3pm  
Batesford Reserve  
Power Avenue, Chadstone  
www.monash.vic.gov.au/macd

**Get into Art! A weekend of FREE activities at MGA**  
Join the fun! A forum on Surrealism in Photography features speakers including Australian photographer Pat Brassington. Kids can create their own animal mask parade them around the ground of MGA.  
Please contact MGA for more details. Bookings essential.  
24 & 25 October  
MGA mga.org.au  
☎ 95621569

**Hughesdale Art Group - Demonstration in Acrylics**  
Craig Penny will demonstrate in acrylics. Visitors welcome.  
28 October, 7.45pm  
Hughesdale Community Hall

Cnr Kangaroo and Poath Roads, Hughesdale  
Melways ref 69C7  
mc2.vicnet.net.au/home/hagroup/web/index.html  
☎ 9568 8396

**Body in the Library...**  
Back by popular demand, stories of crime, corruption and murder by some of Melbourne's celebrated crime writers and experts.  
Dates and times to be confirmed.  
www.monlib.vic.gov.au  
☎ 9560 1655

**Hughesdale Art Group presents its Annual Art Exhibition and Sale**  
Opening Cup Night  
Tuesday 3 November, 8pm  
3 – 7 November Open daily  
10am – 9pm, closes 3pm  
Saturday 7 November  
Hughesdale Community Hall  
Cnr Kangaroo and Poath Roads, Hughesdale  
☎ 9568 8396

**RSPCA Presentation**  
Learn more about the great work that goes on at the RSPCA and how we can all play a part in the protection and care of animals.  
10 November, 2pm  
Glen Waverley Library  
For further details visit [www.monlib.vic.gov.au](http://www.monlib.vic.gov.au)  
☎ 9560 1655

Workshops

**Society for Asian Languages and Arts Inc. - Children Bilingual Choir**  
Children from ages 6 – 12 welcome. Choir sings in English and Chinese on Saturday mornings.  
18 July – 12 September  
11.15am – 12.45pm  
Lecture Theatre, Caulfield Grammar School  
74 – 82 Jells Road, Wheeler's Hill  
www.sala.asn.au  
☎ 0419 004 035

**Monash Gardening Clubs and Societies Information Evening**  
An evening those interested in joining a gardening and permaculture group. Get some tips on achieving great spring results in your garden.  
10 September, 6.30pm  
Mount Waverley Library  
www.monlib.vic.gov.au  
☎ 9807 5022

**Make your own Water Saving Pots (Pottery Demonstration)**  
Jenny Holden from Monash Short Courses returns to do a demonstration on how to make water saving pots.  
17 September, 1pm  
Glen Waverley Library  
www.monlib.vic.gov.au  
☎ 9560 1655

**Seniors Week - Introduction to Meditation**  
Corporate Chillout are hosting a free Meditation Class. Learn more about this practical mind/body skill.  
29 September, 3pm, Clayton Library  
www.monlib.vic.gov.au  
☎ 9544 0668

**Spring Gardening**  
Jennifer Stackhouse, editor of Gardening Australia Magazine, will be giving some great advice.  
1 October, 6.30pm, Clayton Library  
www.monlib.vic.gov.au  
☎ 9544 0668

**Seniors Week – Living Family History with Alzheimers Australia**  
An insightful free presentation by Alzheimers Australia designed for anyone wanting to discover their family history. Presented by Monash Public Library Service in acknowledgement of Seniors Week.  
1 October, 2pm  
Monash Federation Centre  
Oakleigh  
www.monlib.vic.gov.au  
☎ 9563 4138

**Seniors Week - Laughter is the best Medicine**  
Corporate Chillout's presents a laughter therapy session guaranteed to put a smile on your face for seniors week.  
2 October, 2pm  
Wheeler's Hill Library  
www.monlib.vic.gov.au  
☎ 9561 6211

**Sustainable Gardening**  
A free sustainable gardening discussion with Joe Lunadello and Julie Hayes (Monash City Council).  
6 October, 6.30pm  
Clayton Library  
www.monlib.vic.gov.au  
☎ 9544 0668

**Floral Art**  
Floral Artist, Barbara Maier will demonstrate the finer points of creating a tabletop masterpiece.  
12 October, 6.30pm  
Wheeler's Hill Library  
www.monlib.vic.gov.au  
☎ 9561 6211

**Spring – Vegies: Grow Your Own with Jane Edmanson**  
The ABC's Jane Edmanson will share her knowledge on growing a bumper crop of vegetables this spring.  
21 October, 2pm  
Clayton Library  
www.monlib.vic.gov.au  
☎ 9544 0668

Venues

Monash Civic Centre 293 Springvale Road, Glen Waverley 3150 ☎ 9518 3636  
Monash Gallery of Art 860 Ferntree Gully Road Wheeler's Hill 3150 ☎ 9562 1569  
Wheeler's Hill Library 860 Ferntree Gully Road, Wheeler's Hill ☎ 9561 6211  
Glen Waverley Library 112 Kingsway, Glen Waverley ☎ 9560 1655  
Mt Waverley Library 41 Miller Crescent, Mt Waverley ☎ 9807 5022  
Clayton Library Cooke Street, Clayton ☎ 9544 0668  
The Highway Gallery 14 The Highway (cnr Gallery Place) Mount Waverley 3149 ☎ 9807 7261  
Unicorn Theatre (Home of the Peridot Theatre Company) Lechte Road Mount Waverley 3149 ☎ 5988 0465  
Mount Street Neighbourhood House, 6 Mount Street Glen Waverley 3150 ☎ 9803 8706  
Mt Waverley Community Centre 5 Fleet Street Mt Waverley ☎ 9807 6011  
Alexander Theatre Building 7, Monash University, Clayton Campus, Wellington Road, Clayton ☎ 9905 1111

Arts Life is a free arts publication produced quarterly by the City of Monash Arts and Cultural Development Unit.  
If you wish to feature your arts related activities in forthcoming issues of Arts Life, please contact Ph: 9518 3636 TTY: 9518 3655 or email [events@monash.vic.gov.au](mailto:events@monash.vic.gov.au) to be added to the email database for Arts Life.

