



CITY OF
MONASH

monashbulletin

www.monash.vic.gov.au

January 2023

Looking ahead to 2023

The New Year has arrived and it's a good time to look at what's ahead for Monash in 2023!

Work on the construction of the \$26.7 million, 18-court Glen Waverley Sports Hub tennis facility, next to the Glen Waverley Golf Course, is underway with players expected to hit the courts in early 2024. The State Government has committed \$21 million to the project with a \$5.7 million contribution from Council. It will feature a pavilion for tennis and golf, café and public open space improvements.

We're progressing with design work to extend the Bogong Car Park by four storeys to provide an additional 518 car parking spaces, for a total of 1032 overall spaces, close to the thriving heart of Glen Waverley.

We're building more Early Years Hubs, offering kindergarten spaces, Maternal and Child Health Services and a playgroup for children with additional needs, all in the one place. We've opened one already at the former Wellington kindergarten with construction underway on another hub at Pinewood and plans for another near Scammell Reserve.

Council will continue delivering on its commitment to achieve net zero emissions by 2025. To date, there has been a 78% reduction of Greenhouse Gas emissions and a 28% reduction in electricity costs (equating to \$611,000 per year). *Read more on page five.*

Keep up to date:  www.monash.vic.gov.au



CONTACT US

Monash Civic Centre

293 Springvale Road, Glen Waverley
8.30am-5pm | Mon-Fri

Oakleigh Service Centre

3 Atherton Road, Oakleigh
8.30am-5pm | Mon-Fri

9518 3555
www.monash.vic.gov.au
mail@monash.vic.gov.au

NRS (for people with hearing or speech impairments) 1800 555 660

For text version of the Monash Bulletin:

www.monash.vic.gov.au/news

We welcome your feedback:

media@monash.vic.gov.au

@cityofmonash
@MonashCouncil
@MonashCouncil
@MonashCityCouncil

Language Assist

普通话	9321 5485	粵語	7005 3000
Ελληνικά	9321 5482	Viet Ngủ	9321 5487
廣東話	9321 5481	தமிழ்	7005 3003
සිංහල	7005 3002	한국어	9321 5484
Italiano	9321 5483	Bahasa Indonesia	7005 3001

Australia Post delays have affected the delivery of some copies of the Monash Bulletin. As a result, some households may receive the Bulletin later than Council intends. We apologise for any inconvenience caused.



Copyright © 2022 Monash City Council. All Rights Reserved; reproduction in any form will require Council's written approval.

Monash Council acknowledges the Traditional Owners of the land that makes up Monash, the Wurundjeri Woi Wurrung and Bunurong People, and recognises their continuing connection to the land and waterways. We pay our respects to their Elders past, present and emerging and extend this to all Aboriginal and Torres Strait Islander People.

Information in the **January Bulletin** is current at the time of going to print on **30 November 2022**.

HOLIDAY Opening Hours

WASTE AND RECYCLING COLLECTIONS

Rubbish and recycling will be collected as normal through the Christmas period, including on public holidays.

COUNCIL OFFICES

Civic Centre
293 Springvale Rd, Glen Waverley

Oakleigh Service Centre
3 Atherton Rd, Oakleigh

Fri 16 Dec..... Closing at 2pm
Fri 23 & Fri 30 Dec .. Closing at 4pm

Mon 26, Tues 27 Dec & Mon 2 Jan .. Closed

MONASH RECYCLING AND WASTE CENTRE

Fri 16 Dec..... Closing at 1.30pm
Sun 25, Mon 26 & Tues 27 Dec Closed
Wed 28 to Sat 31 Dec ..7.30am-3pm
Sun 1 & Mon 2 Jan..... Closed

MONASH LIBRARIES

Fri 23 Dec 10am-4pm*
Sat 24 Dec 9am-4pm*
Sun 25, Mon 26 & Tues 27 Dec Closed
Wed 28, Thurs 29 & Fri 30 Dec 10am-6pm
Sat 31 Dec 9am-4pm
Sun 1 & Mon 2 Jan Closed
Tues 3 Jan..... Normal hours resume

*Mulgrave Library will operate with standard opening hours prior to closing for the fortnight from **Sun 25 Dec to Sun 8 Jan** inclusive.

MONASH AQUATIC AND RECREATION CENTRE*

626 Waverley Rd, Glen Waverley

Sat 24 Dec..... 8am-6pm
Sun 25 Dec Closed
Mon 26 & Tues 27 Dec 9am-6pm
Wed 28 & Thurs 29 Dec ..5.45am-9pm
Fri 30 Dec 5.45am-9pm
Sat 31 Dec..... 8am-6pm
Sun 1 & Mon 2 Jan..... 9am-6pm
Tues 3 & Wed 4 Jan.... 5.45am-9pm

CLAYTON AQUATICS AND HEALTH CLUB*

Cooke St, Clayton

Sat 24 Dec..... 8am-5pm
Sun 25 Dec Closed
Mon 26 & Tues 27 Dec 9am-5pm
Wed 28, Thurs 29 & Fri 30 Dec 6am-9pm
Sat 31 Dec..... 8am-5pm
Sun 1 & Mon 2 Jan..... 9am-5pm
Tues 3 & Wed 4 Jan..... 6am-9pm

OAKLEIGH RECREATION CENTRE*

Park Rd, Oakleigh

Sat 24 Dec..... 8am-6pm
Sun 25 Dec Closed
Mon 26 & Tues 27 Dec 9am-6pm
Wed 28, Thurs 29 & Fri 30 Dec 6am-9pm
Sat 31 Dec..... 8am-6pm
Sun 1 & Mon 2 Jan..... 9am-6pm
Tues 3 & Wed 4 Jan..... 6am-9pm

*Recreation Centre opening hours may be subject to change.

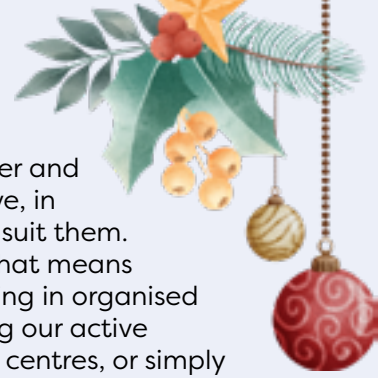
CHRISTMAS CAROLS cancellation

The last Monash Bulletin had information about our Carols by Candlelight.

Unfortunately, in consultation with Parks Victoria who manage Jells Park, the difficult decision was made that it was not safe for the park to be used due to the extreme wet weather and resulting condition of the ground. We had hoped the ground would dry out, but it was not possible for infrastructure, staging, emergency vehicles, or overflow parking to be safely provided given the mud.

We know how much our community looks forward to Carols, and we were disappointed not to be able to hold this event. To find out how we're celebrating Christmas, read about our Christmas Tree at Eaton Mall (page three) and our 12 Days of Christmas program (back cover).

MESSAGE FROM Mayor Cr Tina Samardzija



This is my first column as your new Mayor, a position I am honoured to hold.

I am fortunate to have excellent Councillor colleagues supporting me and am grateful they have put their confidence in me as Mayor. I know we will continue to work collaboratively to benefit our community in the year ahead.

Our priority at Council continues to be COVID recovery. Although we've faced many challenges, there is so much positivity and hope within our community.

Since becoming a Councillor, the resilience I see within our

community has been one of my biggest inspirations.

So many wonderful people among us think first – what can I do to help others? Not, what's in it for me? These are the people that inspire me every day to keep going and do what I can to make things better.

People who see someone who needs helping, something that needs improving, and just get on and do it.

The best way Council can support our community is to provide those core services you rely on, and make sure we do so effectively and efficiently, getting the best value for money.

With two young children, I know the important role Council plays in the lives of families. I will continue Council's focus on services and infrastructure for our youngest residents and their families such as kindergartens, playgrounds, and maternal and child health facilities.

I want Council to help our local community

be healthier and more active, in ways that suit them. Whether that means participating in organised sport, using our active recreation centres, or simply getting out and about in our parks and local areas. And I want Council to do more to help mothers prioritise their own health and wellbeing, because I know it can be so easy to prioritise caring for children and others and put ourselves second.

And when we plan for and provide these things, we need to ensure our migrant community is part of that.

More than 50 per cent of Monash residents were born overseas like my parents, and I'm proud of my heritage. Our diversity is our strength, and I'll continue to highlight and celebrate this. Your perspectives, lived experiences, hopes and dreams matter, and we want to hear them.

I hope to see you out and about this year – please get in touch if I can assist in any way.

Please contact me anytime if you have any queries or feedback

on ☎ 0435 011 927 or ✉ tina.samardzija@monash.vic.gov.au

Mayor Cr Tina Samardzija and Deputy Mayor Cr Nicky Luo



CHRISTMAS SPIRIT lighting up Eaton Mall

Eaton Mall in Oakleigh is alive with Christmas spirit as the Monash Christmas Tree shines bright each night until Christmas.

Local families and residents joined Mayor Cr Tina Samardzija, Deputy Mayor Cr Nicky Luo and Cr Theo Zographos to officially 'light up the mall' on 18 November.

Thank you to everyone who joined us to kick off this year's festive season in Monash.

The Monash Christmas Tree is located at the Atherton Road end of Eaton Mall in Oakleigh. We invite you to come past for a photo with family and friends, and grab lunch or dinner in one of our incredible Oakleigh restaurants nearby.



NEW DOG OFF-LEASH policy for Monash

Following extensive community consultation, Council has endorsed a new Off-Leash Policy to guide how we manage our open space with increasing dog ownership in Monash.

This process also included a review of off-leash areas across Monash, looking to increase this space and suggest changes to some sites already designed as off-leash areas.

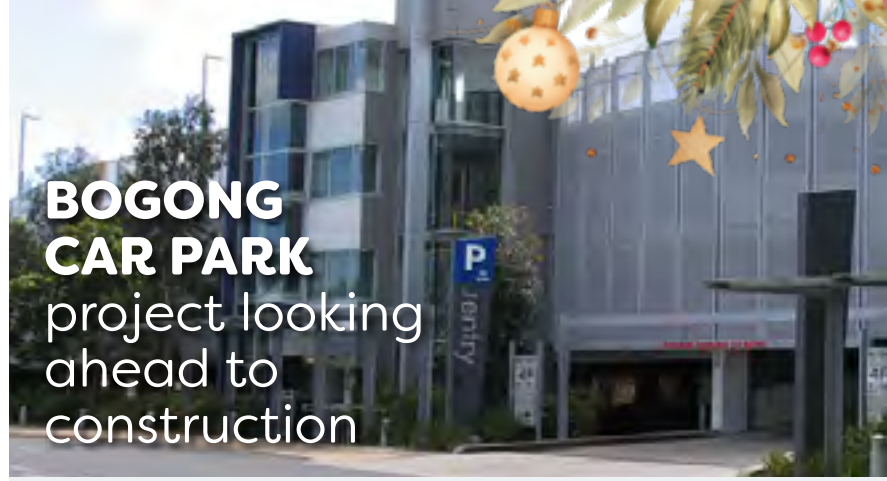
Like other inner-suburban Councils, Monash is experiencing population growth and pressure on our public open spaces. With a continued increase in the number of registered dogs in Monash, planning and managing off-leash areas for people to walk and exercise their dogs is critical.

This work was informed by community consultation, including hundreds of pieces of feedback via our Shape Monash online consultation hub, formal submissions, and petitions.

Go to shape.monash.vic.gov.au/dogs to find out more about what happens next.



BOGONG CAR PARK project looking ahead to construction



Planning for delivery of the extension to the existing multi-level car park in Bogong Avenue, Glen Waverley is on track, with a tender for construction to be released shortly. Council will then consider whether it awards a tender to construct the extension to the carpark in the coming months.

The extension of four additional floors will provide approximately 518 new car parking spaces at the Bogong Ave site.

As part of the process, we're also planning for the closure of the existing car park, due to the extension works, and the potential disruption to car parking within the activity centre.

Consideration is being given to other car parking opportunities. We are reviewing on-street parking in close proximity, identifying opportunities to change existing parking restrictions and accommodate parking lost during construction. We will speak to residents in those streets about any changes proposed.

We remain steadfast in our commitment to providing additional, accessible and safe car parking spaces to residents and local businesses.

Further information about parking in the area will be provided as the project gets closer to construction.

More info: shape.monash.vic.gov.au/bogong

COUNCIL CELEBRATES endorsement of inaugural LGBTIQ+ Action Plan

Council's recently endorsed LGBTIQ+ Action Plan builds upon our strong commitment to inclusion, and provides a framework with clear actions to better understand and respond to the experiences and priorities of our LGBTIQ+ communities.

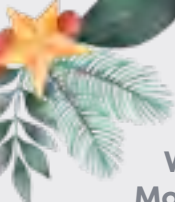
As the closest level of government to the community, we believe we have an important role in

working together to celebrate diversity, promote social inclusion and to promote equity, safety and access across Monash for all people, regardless of sexuality, sex characteristics or gender identity.

Developed with input from our community, and in close collaboration with Council's LGBTIQ+ Advisory Committee, the four-year plan includes actions under key priority areas.

Not sure what **LGBTIQ+** stands for? At Monash we use LGBTIQ+ for lesbian, gay, bisexual, transgender, intersex, queer/questioning and asexual. The plus sign acknowledges that language may evolve in how we describe the diverse ways in which people can experience gender, sexuality, and sex characteristics.

Read the plan: shape.monash.vic.gov.au/lgbtqa



BIKE REPAIR help is at hand

We've installed a new bike repair station at our Monash Aquatic and Recreation Centre (MARC) in Glen Waverley. Complete with a bike pump and tools, the repair station will allow bike users to make minor repairs.

For those needing guidance, there is a QR code on the bike repair station that you can scan to connect you to information on how the tools are used and how to make simple repairs.

For the locations of other bike repair stations in Monash, or if you are interested in bike events and wish to be contacted about future workshops, contact: sustainability@monash.vic.gov.au



NET ZERO update

We've made great strides towards achieving our target of zero carbon by 2025 for greenhouse gas (GHG) emissions as part of our Zero Net Carbon Action Plan.

We set a target of 60% GHG emission reduction by July 2022 and have exceeded it, achieving a 78% reduction, due largely, to our 100% renewable energy partnership, with 46 other Victorian councils, under the Victorian Energy Collaboration.

Other changes we've made to meet our target include:

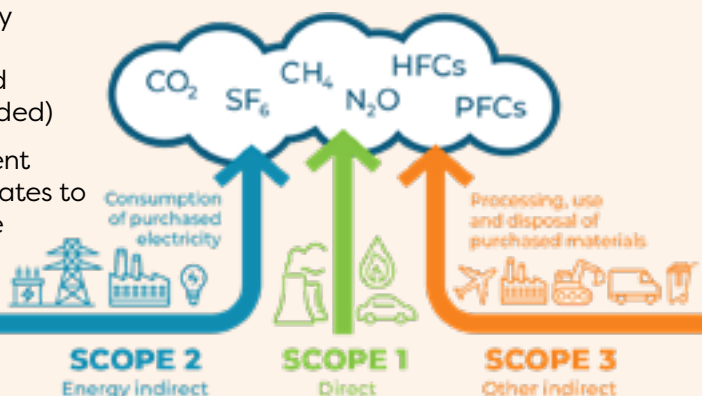
- » Eight energy audits on community buildings completed (grant funded)
- » Procurement policy updates to encourage energy

efficiency, emission reduction and increased use of recycled materials

- » More electric vehicles, charging stations and improved fleet efficiency
- » Ongoing support of Energy Savers for business and Solar Savers for community.

We've had success in attracting almost \$1.95 million in grant funding to deliver low emission actions in our plan and will continue pursuing funding into the future.

Read more on our progress report here: www.monash.vic.gov.au/zero-net-plan



SOFT PLASTICS recycling changes



Council was incredibly disappointed at the recent, sudden and unexpected halt of the Redcycle soft plastics recycling program at Coles and Woolworths.

This program provided an option for people to redirect items like plastic bags away from landfill and into the recycling system. We have since been seeking guidance from other levels of government and the recycling sector about alternative options.

More info: www.monash.vic.gov.au/soft-plastics-recycling-changes

MEET OUR Recycling Right Champion

Hughesdale resident Ruth Perry, has been named one of our Recycling Right Champions, receiving a 'gold star rating' for household recycling and food waste disposal practices.

Ruth is one of many residents who are helping us to create a more sustainable Monash.

Ruth's top tips for recycling right include keeping her three main kitchen bins for general, food and recyclable waste close by, as well as having an easy-to-reference recycling guide on the fridge to refer to when unsure of how to dispose of something.

Other quick wins include stocking reusable items in the kitchen such as reusable sandwich bags instead of Glad Wrap to avoid soft plastics, and regularly looking to sell or deliver unwanted textiles or clothing to the local op-shop.

Ruth says, like many, she runs a busy household and doesn't always get it right, but believes it is important to continue to 'do your part' to support the environment and reduce our carbon footprint for future generations.

Need a quick 'How to Recycle Guide?' Go to www.monash.vic.gov.au/How-do-I-recycle



COUNCILLOR NEWS

Cr Paul Klisaris

In compiling this column, it is an opportunity to reflect on the year that has been, the achievements of Council and my own contribution.

I am proud of what we have achieved in the past year, together with the Monash community, in what has at times been an uncertain and challenging situation with COVID very much a factor, particularly early in 2022.

As someone who operates a small business, I have been very aware of the difficulties faced by our business community. Hopefully we are now at a place where we can focus on the future.

I was delighted, along with my Councillor colleagues, to finally be able to acknowledge in person our wonderful community members recognised for their community work with a Sir John Monash Award nomination. It was an outstanding night and thank you to all our worthy nominees. Pictured above, with me, is the 2022 Multicultural Champion winner Sithy Marikar.

Without doubt, another highlight for me this year was the support by Council for a new sporting and community pavilion at Jack Edwards Reserve. This has been a project I have championed during my time on Council, and I believe that this well-designed facility will become a landmark that both the club and the community will be proud of.

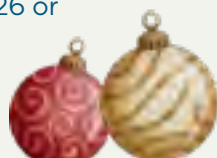
Council is contributing \$8.2 million towards this project, with a \$4 million contribution from the State Government, \$2 million from the Federal Government and \$500,000 from the Oakleigh Cannons Football (Soccer) Club.

The pavilion will be designed to be accessible to community groups and meet the high standards for soccer as set by Football Victoria. It will include new change rooms, referee rooms, storage facilities, a first aid room, community meeting space with a commercial kitchen and wet area. Meeting rooms, accessible public toilets, and undercover seating for at least 500 patrons with associated landscaping feature in the project.

Importantly, the new pavilion will play a pivotal role in providing facilities that support young girls and women to excel, levelling the playing field in terms of accessibility and opportunity in women's sport. Something that is lacking and needs to be improved.

There is still work to be done to make-up the \$2 million in additional funding for this project. Different avenues of funding are being explored to make up the shortfall. We have before us an opportunity to deliver an outcome that is innovative and exceptional. I am excited about what we can deliver to improve facilities for the club and our community.

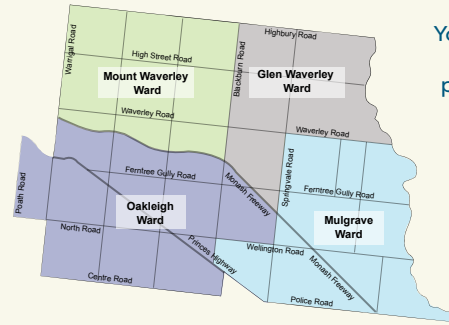
Feel free to contact me at: 0412 516 026 or Paul.Klisaris@monash.vic.gov.au



YOUR Councillors

You can contact Councillors via phone or email. Letters can be mailed to:

PO Box 1
Glen Waverley
VIC 3150



Glen Waverley Ward

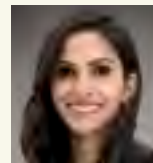


Cr Geoff Lake
0411 645 281
Geoff.Lake@monash.vic.gov.au



Cr Nicky Luo
Deputy Mayor
0451 560 398
Nicky.Luo@monash.vic.gov.au

Mount Waverley Ward



Cr Anjalee de Silva
0424 679 096
Anjalee.deSilva@monash.vic.gov.au

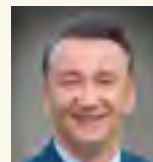


Cr Brian Little
0407 878 033
Brian.Little@monash.vic.gov.au



Cr Rebecca Paterson
0437 959 163
Rebecca.Paterson@monash.vic.gov.au

Mulgrave Ward



Cr Paul Klisaris
0412 516 026
Paul.Klisaris@monash.vic.gov.au

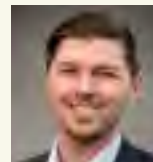


Cr Shane McCluskey
0466 345 406
Shane.McCluskey@monash.vic.gov.au



Cr Tina Samardzija
Mayor
9518 3524 /
0435 011 927
Tina.Samardzija@monash.vic.gov.au

Oakleigh Ward



Cr Josh Fergeus
0466 465 421
Josh.Fergeus@monash.vic.gov.au



Cr Stuart James
0413 184 250
Stuart.James@monash.vic.gov.au



Cr Theo Zographos
0430 316 911
Theo.Zographos@monash.vic.gov.au

NEXT COUNCIL Meeting

Tuesday 31 January, 7pm

Monash Civic Centre
293 Springvale Rd, Glen Waverley

Attend the meeting in-person or watch it live:
 webcast.monash.vic.gov.au

Meeting agenda and most up-to-date info:
 www.monash.vic.gov.au/meetings

LUNAR NEW YEAR

help celebrate the Year of the Rabbit

Join us in celebrating the Year of the Rabbit at the 2023 Glen Waverley Lunar New Year and Lantern Festival.

The festival, to be held on Sunday 5 February (11am - 9pm) in Kingsway, will be a feast of colour, music and food.

The annual Lunar New Year celebration is the most important cultural festival for the Chinese community and celebrates the coming of the new year with rituals, traditions and ceremonies designed to bring new luck and good fortune for the coming year.

In the Chinese Zodiac, the rabbit's personality and characteristics include being tender, decent and generous.

This highly-anticipated, annual event is organised by the Monash Chinese Events Committee with support from Monash Council.

The Lunar New Year and Lantern Festival is just one entry on an exciting calendar of events in early 2023, with the Clayton Festival set for Sunday 26 February and Live at Warrawee on Saturday 18 March.

Read more about our busy festival season

www.monash.vic.gov.au/Council-Festivals-and-Events



COME HAVE a kick at Oakleigh

To help celebrate Jack Edwards Reserve in Oakleigh being shortlisted as a possible team base camp for next year's FIFA Women's World Cup Australia and New Zealand 2023, and to bring new young participants to the sport, we're holding a big junior football event.

Some 150 budding Matildas and Socceroos are expected to flock to Jack Edwards Reserve on Saturday 4 February for a day of fun, activity and the world game.

We'll have coaches running drills, games and fun activities in a Come and Try session (10am-12pm) and, later (1pm-4pm), there'll be inflatable football areas available for children to enjoy putting their new skills to the test.

Registration for the event will open in January.

More info and to register

www.monash.vic.gov.au/active-communities



CITY OF
MONASH

FREE
event and
pool entry

CLAYTON FESTIVAL

SAVE THE DATE
26 February 2023

For more info: 9518 3636
www.monash.vic.gov.au/festival



#ClaytonFestival2023
#ThisIsMonash



12 DAYS of Christmas in MONASH



1 Tuesday 13 December

Poath Road Parklet,
Hughesdale
3pm-6pm: Roller Skaters

2 Wednesday 14 December

Winbourne Road Parklet,
Mount Waverley
3pm-6pm: Circus Tricks

3 Thursday 15 December

Huntingdale
Shopping Centre
3pm-6pm: Tap Duo

4 Friday 16 December

Kingsway, Glen Waverley
3pm-6pm: Adagio Elves,
Stilt Walkers

5 Saturday 17 December

Eaton Mall, Oakleigh
10am-1pm: Lolly Ladies
with Bubbles, Roller Skaters

6 Sunday 18 December

Clayton Community
Centre & Clayton Road
10am-1pm: Roller Skaters,
Circus Tricks

7 Monday 19 December

Pinewood Shopping
Village, Mount Waverley
3pm-6pm: Roller Skaters

8 Tuesday 20 December

Poath Road Parklet,
Hughesdale
3pm-6pm: Adagio Elves

9 Wednesday 21 December

Winbourne Road Parklet,
Mount Waverley
3pm-6pm: Circus Tricks

10 Thursday 22 December

Huntingdale
Shopping Centre
3pm-6pm: Tap Duo

11 Friday 23 December

Clayton Community
Centre & Clayton Road
3pm-6pm: Adagio Elves,
Stilt Walkers

12 Saturday 24 December

Brandon Park
Shopping Centre
10am-1pm: Lolly Ladies
with Bubbles, Roller Skaters

www.monash.vic.gov.au/festivals

Program subject to change

 BarryPlant



 EastLink
Time better spent.

89.9
the light