

Monash | June 2026

# BULLETIN



Playtime  
just got  
better

## INSIDE THIS ISSUE

- Community Grants
- Budget highlights

- Library's big move
- Road Management Plan

# Services and projects we rely on

## Message from Mayor, Cr Stuart James

Council recently adopted the Monash Budget 2026/27, setting out how we will continue investing in the services, facilities and infrastructure our community relies on every day.

This Budget reflects the priorities residents told us matter most during consultation on our Council Plan. It has been developed in a challenging financial environment, shaped by rising costs and the constraints of rate capping,

while balancing the need to deliver for our community today and manage our finances responsibly for the future.

When people think about council budgets, they often think about roads, waste services and major projects. But it is equally important to highlight that we are committing \$250 million to the everyday services our community relies on, including immunisation, maternal and child health,

libraries, youth services, town planning and customer service.

Within the Budget, more than \$86 million has been allocated to projects across Monash to renew and improve the infrastructure our community relies on. This includes local roads and footpaths, parks, sporting clubs and community facilities, along with initiatives that support environmental sustainability and climate action.

See the map on the next page for some of our project highlights and visit [monash.vic.gov.au/budget](https://monash.vic.gov.au/budget) to learn more about the programs, services and projects this Budget will make possible.

Thank you to everyone who took the time to contribute ideas, share feedback and help shape this Budget. Your input has helped Council focus on the services, projects and facilities that matter most to our community.



*We recently celebrated a \$2.25 million upgrade of the tennis courts at Glen Waverley North Reserve. In our 2026/27 budget we'll be investing in tennis venues like the Whites Lane Tennis Club, as part of an \$86 million investment in projects across Monash.*

## Grants building a stronger Monash



*A Monash community grant has powered the all-girls robotics team, RoboCats.*

This year, our community grants program received a record number of applications from community groups who will share in \$2.55 million in grants for programs that meet community needs.

One recent recipient, Melbourne RoboCats, is an all-girls robotics team changing how young people experience STEM (science, technology, engineering and mathematics).

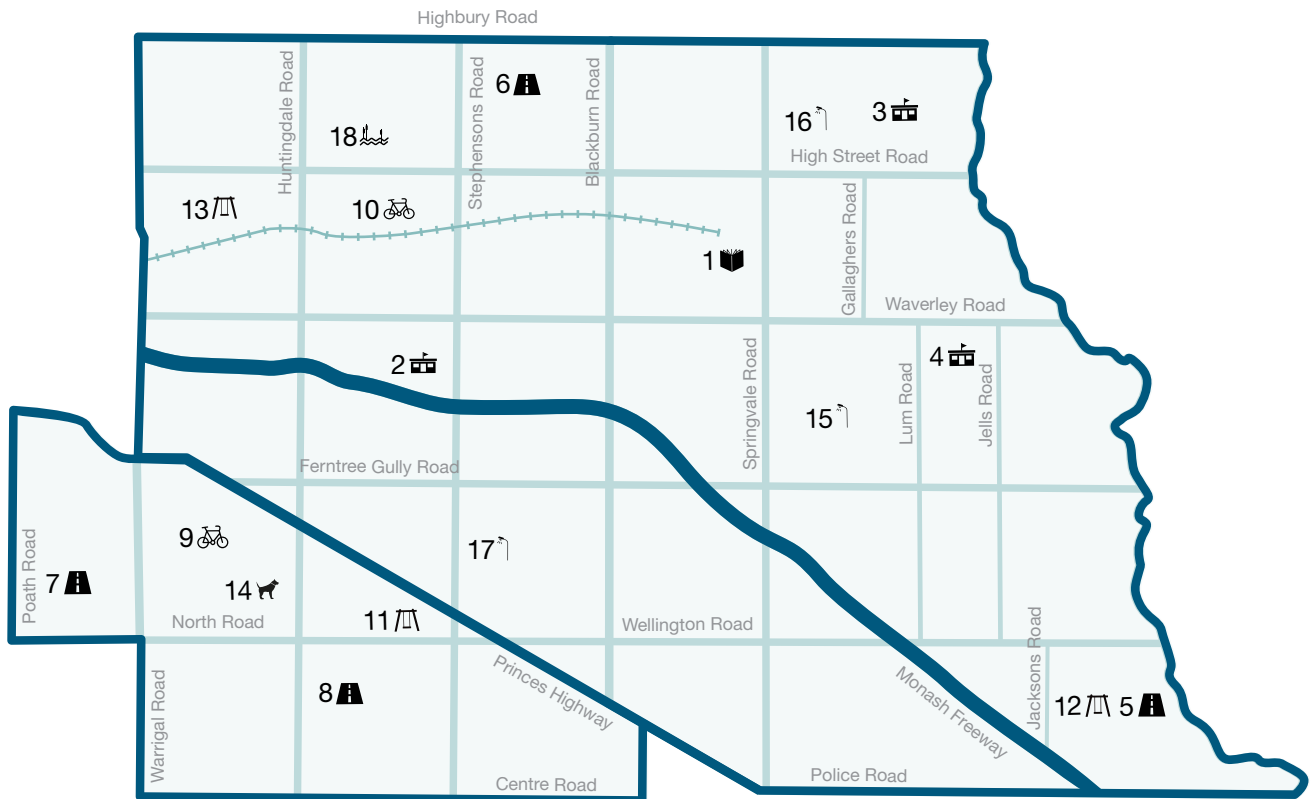
Each year, the RoboCats team designs and builds a 50kg

competition robot to take on teams from across Australia and Oceania. For many of the girls, it's their first exposure to engineering, coding or electronics.

With support from a Monash community grant, the RoboCats have been able to run intensive build workshops at the Monash Men's Shed in Glen Waverley.

Learn more and subscribe for updates about future grant opportunities at [monash.vic.gov.au/community-grants](https://monash.vic.gov.au/community-grants)

# 2026/27 Budget Highlights



### Major construction

1. New Glen Waverley Library



### Sporting pavilions and facilities

2. Mayfield Park, Mount Waverley
3. Capital Reserve, Glen Waverley
4. Wheelers Hill Tennis Club, Wheelers Hill



### Road reconstructions

5. Haverbrack Drive, Mulgrave
6. Emerald Street, Mount Waverley
7. Hotham Street, Hughesdale
8. Coora Road and Haughton Road, Oakleigh South



### Cycle improvements

9. Scotchmans Creek to Djerring Trail, Oakleigh
10. Jordanville Station to Mount Waverley Station, Mount Waverley



### Playspaces

11. Princes Highway Reserve, Oakleigh
12. Gladeswood Reserve, Mulgrave
13. Queens Parade Reserve, Ashwood



### Dog off-leash improvements

14. Jack Edwards Reserve, Oakleigh



### Sports lighting

15. Whites Lane Tennis Club, Glen Waverley
16. Larpent Reserve, Glen Waverley
17. Carlson Reserve, Clayton



### Wetlands desilting

18. Dampier Creek Conservation Reserve, Mount Waverley

## Reconstruction serves up big improvements

The tennis courts at Glen Waverley North Reserve, on Mulgrave Street, have been upgraded and a new online booking system is making it easier for everyone, including casual players, to get on court.

Our \$2.25 million upgrade includes six synthetic grass courts, new LED lighting,

updated fencing and improvements to prevent damage from tree roots.

Glenburn Tennis Club President Andy Quah said the upgrade has made a big difference after years of temporary fixes.

“Roots had come up through one of the courts rendering it,

basically, unplayable,” he said. “Having the courts fixed was very important to us. This will really modernise the club; it looks fabulous. We really are very grateful.”

Read more and book a game at [monash.vic.gov.au/Glenburn-Tennis](http://monash.vic.gov.au/Glenburn-Tennis)

# Celebrating NAIDOC Week

Help celebrate '50 Years of Deadly' by getting involved in Council's Connecting to Country and Culture — our eight-week immersive program of events, cultural learning and truth-telling.

Enjoy a special stargazing event and connect with the cosmos through the night sky, attend Marra Marra: Our Countries Song exhibition launch or bring the kids along to hands-on activities like the Maloga Art Youth Session, Native Bush Tucker Workshop, or the Na Djinang Circus Workshop Series for both kids and adults.

Explore the full program at [monash.vic.gov.au/first-nations](https://monash.vic.gov.au/first-nations)

---

## Talk to our Age Well team

Do you have questions about staying active, connected and supported at home as an older adult in Monash? Do you have ideas for programs for older adults in Monash?

Talk to our Age Well team at a meet-and-greet session. They'll be out and about across Monash in June, July and August: [monash.vic.gov.au/age-well-sessions](https://monash.vic.gov.au/age-well-sessions)



*Hughesdale Kindergarten's mud kitchen is a hit with Henry and Lewis.*

## Playtime is better

Children at Hughesdale Kindergarten are making mud soup, racing down slides and drawing on a giant chalkboard after a \$1 million upgrade to their outdoor learning area.

The upgrade includes new play equipment, shade sails, a flexible indoor-outdoor verandah and a nature-inspired design.

The mud kitchen is an instant hit with four-year-old Henry: "I like making yucky soup in the mud kitchen!" His friend Lewis agreed: "I like making yucky soup for dinner."

For Henry's mum, Georgina, the upgrade has brought out the site's potential.

"It's so big and bright now. It's opened up space we didn't

know we had," she said. "It's also more inclusive because all play equipment is on a level surface, so children of all abilities can enjoy the space."

Funded by the Victorian Government and delivered by Council, this is one of several kindergarten upgrades over the past two years.

There are 31 kindergarten programs available through Council's registration system.

2027 kindergarten registrations are now open. Submit your preferences at [monash.vic.gov.au/kinder-enrolment](https://monash.vic.gov.au/kinder-enrolment) by 30 June.

## Learn how to DJ with The Push

**Who:** Ages 15–25

**When:** Saturday 11 July, 3–5pm

**Where:** Alvie Hall, corner High Street Road and Alvie Road, Mount Waverley

**Book:** [www.trybooking.com/DMAOO](https://www.trybooking.com/DMAOO)



# Looking back: the legacy George helped build

By the time construction began at the original Glen Waverley Library in Kingsway in 1975–76, George Mulgrew was already an experienced tradesman.

The Glen Waverley resident, who turns 99 this year, was part of the carpentry team that helped bring the much-loved library to life - and nearly 50 years later, he still remembers the project with great fondness.

“There were four of us and we worked on the columns and that; there were lots of things inside too,” George said. “We were there from day one - in the mud and the clay.”

George said his boss on the Glen Waverley site was highly organised, laying out the day’s tasks every morning before setting the team to work.

“I was able to put my hand to 99 per cent of the jobs. I just enjoyed being there,” George said.

While modest about his contribution, he takes pride in having helped build a place that has served generations of the Glen Waverley community.

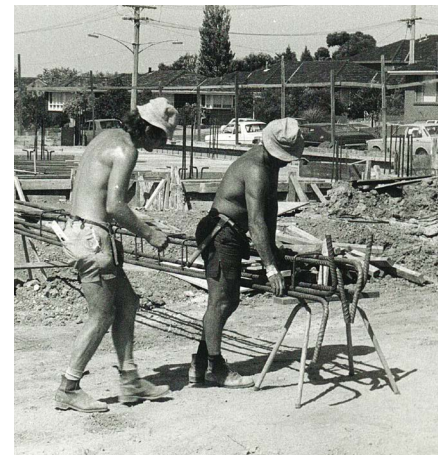


(Above) Tools at the ready. One of the highlights of George Mulgrew’s carpentry career was working on the original Glen Waverley library. (Below) Construction crew hard at work during the project’s early days (pre OHS).

“It was important at the time — giving young children the opportunity to read a book,” he said.

Today, George says he is looking forward to seeing what this next chapter will bring.

George shares his library story at [monash.vic.gov.au/George](https://monash.vic.gov.au/George)



# Looking forward: temporary library spaces

Two new temporary library spaces will open in Glen Waverley in July, so people can continue to access services and stay connected close to home.

While work continues on the \$110 million Glen Waverley Civic Precinct, including a larger, modern library expected to open in 2028, two temporary sites will support residents in the meantime.

Glen Waverley Library Express will offer a smaller adult collection, with access to public computers, printing and scanning, as well as convenient drop-off and pick-up of library items.

Glen Waverley Children’s Library will provide a welcoming space for families, with a dedicated children’s collection and regular storytime and babytime sessions.

**Glen Waverley Library Express**  
173 Coleman Parade, Glen Waverley

**Glen Waverley Children’s Library**  
Black Flat Community Hall, 685 Waverley Road, Glen Waverley

Learn more:  
[monlib.vic.gov.au/library](https://monlib.vic.gov.au/library)



## Your roads, we're listening

We've updated our Road Management Plan, which sets how often we inspect the 750km of roads and 1,500km of footpaths across Monash.

This includes how often we do proactive inspections, timeframes for repairs and how we respond to issues.

*Our road management team hard at work, making sure footpaths are safe across Monash.*

In late 2025, we asked for community feedback on proposed changes to the plan, including a suggestion to extend footpath repair timeframes.

After hearing concerns about accessibility, particularly for people with mobility needs, we've kept the original 10-day timeframe for footpath repairs.

To report an issue, visit [monash.vic.gov.au/rmp](https://monash.vic.gov.au/rmp)

## Rates notices on the way

Your 2026/27 rates notice will look different this July, with waste charges listed separately. This gives greater transparency about the cost of household waste and recycling services.

Our May Monash Bulletin incorrectly stated that the waste charge safety net concession would only apply for the next two years. This \$150 concession is ongoing for primary residences valued under \$600,000.

Visit [monash.vic.gov.au/waste-charge](https://monash.vic.gov.au/waste-charge) for information.

## No batteries allowed

Never put batteries, or items with a battery, plug or power cord, in your hard waste or household bins - they can start fires in trucks and put drivers and our community at risk.

Take batteries to the Recycling and Waste Centre (380 Ferntree Gully Rd, Notting Hill) or search for a disposal site near you at: [monash.vic.gov.au/batteries](https://monash.vic.gov.au/batteries)



*It's important to maintain your swimming skills throughout the winter months.*

## Keep swimming this winter

Swimming is a lifelong skill and a great way to stay active all year round.

Ongoing lessons help build technique, improve endurance and develop stronger and safer swimmers.

With heated indoor pools, lessons at Monash's aquatic centres are comfortable and accessible for all ages and abilities, even in the colder months.

Whether your child is starting out or you're looking for a way to stay active this winter, learn-to-swim programs are available at Clayton and Glen Waverley.

Enrolments are open now, with concession rates available for eligible students.

Find out more at [activemonash.vic.gov.au/learn-to-swim](https://activemonash.vic.gov.au/learn-to-swim) or call 9265 4888.

# A budget that delivers

## Cr Nicky Luo (Scotchmans Creek Ward)

As we finalise this year's Council budget, I'm particularly proud of the investment we're making in and around Glen Waverley and Mount Waverley.

At the centre of this is our brand-new Glen Waverley library, which will include event and community spaces. Our existing library is bursting at the seams and, with Glen Waverley expected to continue to grow, this is a once in a generation opportunity for investment in our future. I'm looking forward to work getting underway later this year.

### Sporting infrastructure

Our local sporting clubs play a crucial role in helping people to connect and stay active, so I'm pleased that we'll be providing upgrades in Glen Waverley, including rebuilding the fire damaged pavilion at Capital Reserve and installing sportsground lighting at Larpent Reserve.

### Safer cycling

We're also investing in safer

and more accessible transport connections, including upgrades to the Waverley Rail Trail between Jordanville station and Mount Waverley station, as well as road and footpath improvements right across Monash so people can move around safely and easily.

### Community needs

I would like to thank our Council officers and my fellow Councillors for their work in shaping a budget that reflects our community's priorities and makes responsible choices for the future.

Bringing a budget like this together is never straight forward.

It requires balancing the needs of a growing community with rising costs and limited resources.

I'm excited about what this budget will deliver for Glen Waverley and the broader Monash community. I look forward to seeing these projects come to life in the year ahead.



## Next Council Meetings

Tuesday 30 June, 7pm and Tuesday 28 July, 7pm  
📍 Monash Civic Centre, 293 Springvale Rd, Glen Waverley  
Access meeting agendas and watch in-person or online:  
[monash.vic.gov.au/meetings](https://monash.vic.gov.au/meetings)

## Your Councillors

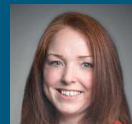
### Banksia Ward

Cr Cameron Little  
Cameron.Little@monash.vic.gov.au  
0472 523 241



### Blackburn Ward

Cr Rebecca Paterson  
Rebecca.Paterson@monash.vic.gov.au  
0437 959 163



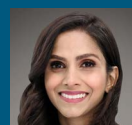
### Gallaghers Ward

Cr Geoff Lake  
Geoff.Lake@monash.vic.gov.au  
0411 645 281



### Gardiners Creek Ward

Cr Anjalee de Silva  
Anjalee.deSilva@monash.vic.gov.au  
0424 679 096



### Jells Ward

Cr Elisha Lee | Deputy Mayor  
Elisha.Lee@monash.vic.gov.au  
0461 305 956



### Mayfield Ward

Cr Brian Little  
Brian.Little@monash.vic.gov.au  
0407 878 033



### Scotchmans Creek Ward

Cr Nicky Luo  
Nicky.Luo@monash.vic.gov.au  
0451 560 398



### University Ward

Cr Josh Fergeus  
Josh.Fergeus@monash.vic.gov.au  
0466 465 421



### Warrigal Ward

Cr Stuart James | Mayor  
Stuart.James@monash.vic.gov.au  
9518 3524 | 0413 184 250



### Waverley Park Ward

Cr Shane McCluskey  
Shane.McCluskey@monash.vic.gov.au  
0466 345 406



### Wellington Ward

Cr Paul Klisaris  
Paul.Klisaris@monash.vic.gov.au  
0412 516 026



# Annual Hard Waste Collection

July – September 2026



Hard waste collection across Monash starts in July. Look for the hard waste flyer in your letterbox to find out when your collection is scheduled.

You can also find your collection date and check what we can and can't collect at [monash.vic.gov.au/annual-hard-waste](https://monash.vic.gov.au/annual-hard-waste)

Some properties (apartments, aged care, accommodation, rooming houses) may not be eligible. Check with your building management or body corporate before putting out items.



## Contact us

Mon to Fri, 8.30am to 5pm

**Monash Civic Centre** 📍 293 Springvale Rd, Glen Waverley, 3150

**Oakleigh Service Centre** 📍 3 Atherton Rd, Oakleigh, 3166

[monash.vic.gov.au](https://monash.vic.gov.au) ✉️ [mail@monash.vic.gov.au](mailto:mail@monash.vic.gov.au) 📞 9518 3555

## Monash Interpreter Service

普通话	4713 5001	සිංහල	4713 5020
廣東話	4713 5002	தமிழ்	4713 5021
Việt Ngữ	4713 5003	Other languages	4713 5000
Ελληνικά	4713 5004		
हिंदी	4713 5005		
Italiano	4713 5008		
한국어	4713 5010		



CITY OF  
MONASH



Monash Council acknowledges the Traditional Owners of the land that makes up Monash, the Wurundjeri Woi Wurrung and Bunurong People, and recognises their continuing connection to the land and waterways. We pay our respects to their Elders past, present and emerging and extend this to all Aboriginal and Torres Strait Islander People.