

CHANGES TO RED AND GREEN BIN COLLECTIONS

Since introducing a food waste recycling service in July 2020, we've heard great stories about how the amount of rubbish in landfill bins has decreased. We've also heard your concerns regarding the fortnightly collection of food scraps.

To address your feedback and allow more food scraps and garden clippings to be collected for composting, we're changing how often bins are collected.

FROM AUGUST 2022:

- » Food and garden waste (green lid) bins will be collected weekly
- » Rubbish (red lid) bins will be collected every two weeks.

There is no additional cost and no changes to the day your bins are collected. Recycling (yellow lid) bins will continue to be collected fortnightly.

If you have Council bins allocated to your individual address, this change applies to you. If you don't have a food and garden waste bin, we will work with you (or the property owner, where applicable) to get one delivered or look at alternate options to support your waste disposal needs.

If you live in an apartment building, or share bins with other properties, your rubbish bin will continue to be collected weekly.

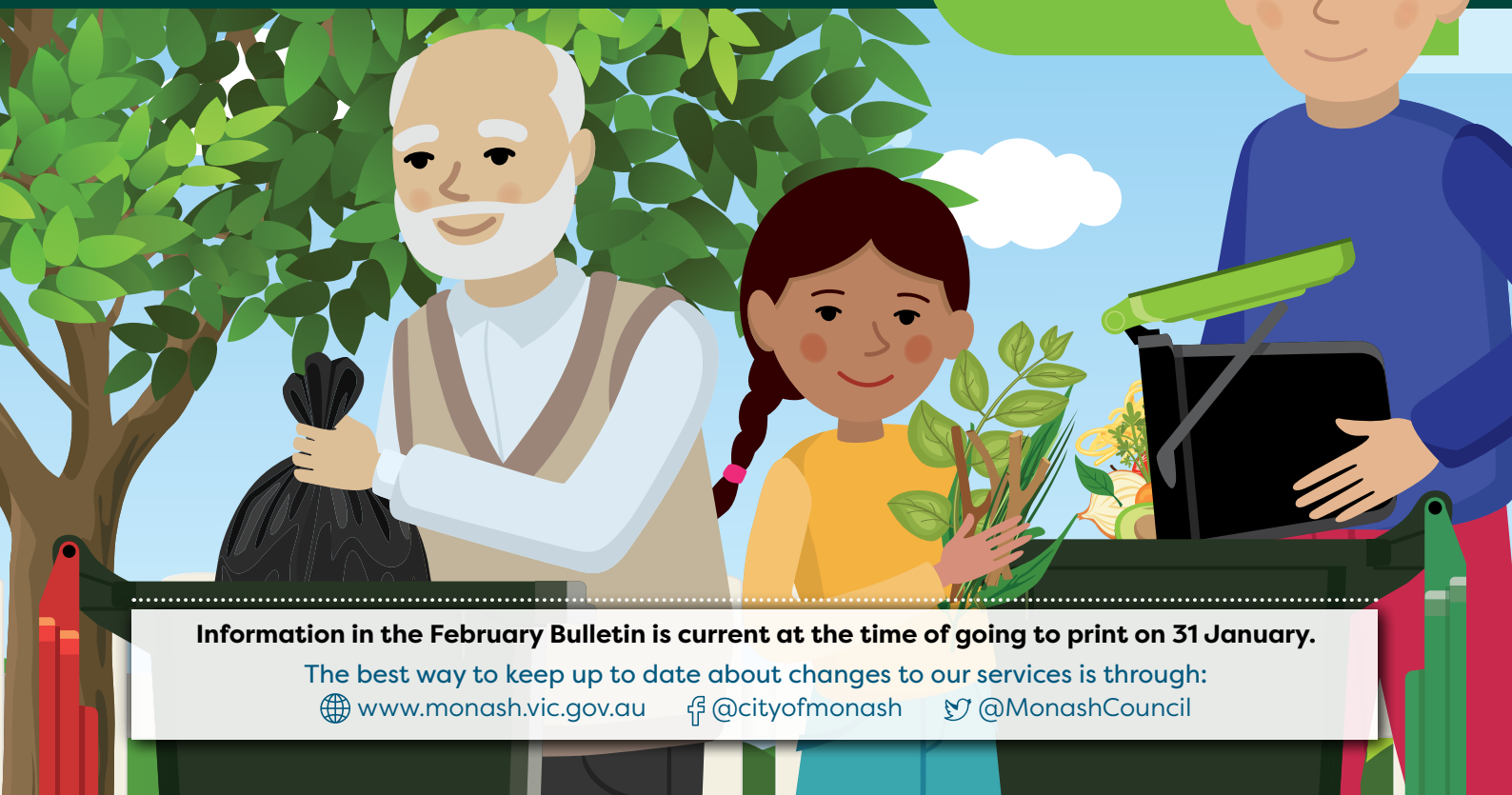
We want to hear from you.

We've provided information on the change with a mailout to every household in Monash. To support you as best we can, we'd like to hear your feedback and better understand what this change might mean for you.



Scan the QR code or go to [shape.monash.vic.gov.au](https://www.monash.vic.gov.au/shape) to share your feedback by **Friday 25 March 2022**

For more information:
www.monash.vic.gov.au/food-waste



Information in the February Bulletin is current at the time of going to print on 31 January.

The best way to keep up to date about changes to our services is through:

www.monash.vic.gov.au [@cityofmonash](https://www.facebook.com/cityofmonash) [@MonashCouncil](https://twitter.com/MonashCouncil)



TENNIS CENTRE design unveiled

Take a first look at the outstanding design for the \$26.77 million Monash Tennis Centre in the Glen Waverley Sports Hub precinct.

The design marks the next step in construction of the centre. Council and North East Link are working in collaboration with Tennis Victoria, to develop the design following the completion of final schematic designs by the project's lead design consultants, Mantric Architecture.

We have also sought feedback from the local community on the design elements.

In a joint partnership with Monash Council, the Andrews Labor Government is investing \$21 million in the new precinct to keep local sports clubs thriving as it builds North East Link.

The sports hub will be located on Council-owned land, zoned Public Park and Recreation, that is part of the Glen Waverley Golf Course.

Plans for the project include a regional level tennis facility, golf practice facilities, public open space

improvements, car parking, a pavilion with facilities for both golf and tennis members

Another exciting aspect of the project is the potential for environmental sustainability opportunities within the design including water sensitive urban design, sustainably-sourced materials with high recycled content and reduced landfill as well as low energy consumption lighting and appliances.

According to the Ausplay Report of 2020, tennis has the highest participation rate of any organised sport in Monash. Tennis participation rates, interest in the sport and being a member of a tennis club are all higher in Monash than the state averages.

By developing the tennis centre in the Glen Waverley Sports Hub, Council is committed to encouraging the growth of tennis in the region and expanding what is already a thriving sports and recreation precinct.

It is expected that construction will start in the second half of 2022 and the centre will be ready for play in early-2024.

For more info: [🌐 shape.monash.vic.gov.au/tennis](https://shape.monash.vic.gov.au/tennis)

Monash Civic Centre

📍 293 Springvale Road
Glen Waverley
🕒 10am-2pm*

Oakleigh Service Centre

📍 3 Atherton Road
Oakleigh
🕒 10am-2pm*

*Subject to change. Check the Monash Council website for the latest update.

📞 9518 3555 ✉️ mail@monash.vic.gov.au

🌐 www.monash.vic.gov.au

National Relay Service

(for the hearing and speech impaired) 1800 555 660

We welcome your feedback: 📞 9518 3678

✉️ joanne.robertson@monash.vic.gov.au

Language Assist

普通话	9321 5485	Ελληνικά	9321 5482
हिंदी	7005 3000	Việt Ngữ	9321 5487
廣東話	9321 5481	සිංහල	7005 3002
தமிழ்	7005 3003	한국어	9321 5484
Italiano	9321 5483	Bahasa Indonesia	7005 3001



Australia Post delays have affected the delivery of some copies the Monash Bulletin. As a result, some households may receive the Bulletin later than Council intends. We apologise for any inconvenience caused.

Copyright © 2021 Monash City Council. All Rights Reserved; reproduction in any form will require Council's written approval.

MESSAGE FROM Mayor Stuart James

Once again, we start the year with the uncertainty of COVID-19 and disappointment that our plans for a return to a more normal life have had to be changed.

Like many organisations, Monash has experienced staff shortages, with some of our team unwell with COVID, or having to isolate due to being close contacts. We have accommodated where we can and are working hard to keep our services operating. If you are planning to visit a Council facility, please check our website first, as there have been times where we have had to adjust our operating hours.

Hosting a Citizenship Ceremony is honestly one of the best parts of my role. It is always such an exciting and exhilarating experience to welcome our new citizens, and one of the greatest days of their lives. Unfortunately, due to the pandemic and rising case numbers, this year's Australia Day Citizenship Ceremony was moved online, where more than 60 new citizens committed themselves to this great

country. We even had some new citizens popping a champagne cork, much to the delight of everyone in attendance.

A massive change is coming to Monash, with alterations to bin collections to occur later in the year. This is one of the simplest ways that we can all work together to reduce the amount of waste going to landfill and its impact on our environment. It will also address community concern over smells from organic waste, particularly through the summer months. We'll be here to support you as we make this change together. My youngest daughters (pictured) April (l) and Zoe love helping with food recycling.

In October last year, I advised you that Council was to shortly consider fenced off-leash dog parks, and that I was optimistic about progression in this area. Unfortunately, Council ultimately decided not to proceed, although it did support my push to consult further with the community on both fenced and non-fenced off-leash



dog parks later this year. If this is something that is important to you, please keep an eye on [shape.monash.vic.gov.au](#) or reach out to your local Councillor.

Other exciting initiatives this year are the creation of a new Arts and Culture Strategy to support and boost our creative community and our Reconciliation Action Plan, working to advance reconciliation and to support inclusion for all First Nations people and their communities.

As always, please reach out if there's something you'd like to discuss.

Follow me on [Facebook @crstuartjames](#) or follow me on [Twitter @crstuartjames](#) and join me on the journey.

NEXT COUNCIL Meeting

The next Council Meeting will be held on **Tuesday 22 February** from 7pm. The meeting's agenda will be published on Council's website from 5.30pm on **Thursday 17 February**.

Monash residents and ratepayers can ask questions at the meeting, with questions to be submitted to Council by 2pm on **Tuesday 22 February**.

At the time of going to print the public could not attend Council meetings in person, which is subject to change depending on the COVID-19 situation. Check our website and social media for further updates.

The meeting remains a public meeting that the community can watch via our livestreaming service at [webcast.monash.vic.gov.au](#)

[www.monash.vic.gov.au/meetings](#)
9518 3555

CCTV INSTALLED in Oakleigh

Council has installed a closed-circuit TV (CCTV) camera in the Council-owned Chester Street car park, the first of four cameras to be installed in the Oakleigh Activity Centre.

Council made the decision to install CCTV in and around the activity precinct following extensive consultation with the local community and businesses which saw overwhelming (78%) support for the cameras.

The State Government is providing \$50,000 towards the purchase and installation of the cameras and Council will contribute \$2500-\$5000 towards ongoing maintenance. Oakleigh Police will have access to real time surveillance footage.



Council will be installing further cameras at locations at the entrance to Eaton Mall on Atherton Road, Chester and Portman Streets, areas owned by Council.

The decision to install the cameras followed increased anti-social and at times violent behaviour in and around the Oakleigh Activity Centre. Signage indicating the areas where the cameras operate will be installed. They are designed to provide surveillance for crime prevention purposes in and around the entrances and exits of the car parks and Eaton Mall.

For more info: 9518 3555
[www.monash.vic.gov.au/cctv](#)



DO YOU HAVE A LITTLE ONE IN NAPPIES?

Council wants to hear from you.

Council is inviting our community members to support a joint study on reusable nappy programs by taking a survey.

Council is calling on parents, primary carers and soon-to-be mums and dads to find out more information about nappies and which ones to use. We want to hear from everybody – whether you’ve only used disposable nappies, you’ve tried reusable nappies and decided they aren’t for you, or you’re a full-blown reusable nappy user and lover.

Your input will support research on a reusable nappy program that aims to reduce household waste that ends up in landfill. With your help, we can gain valuable insights into how Council can better support residents to make environmentally-friendly choices.



Please visit this link to take the survey or scan the QR code.

shape.monash.vic.gov.au/reusable-nappies

We look forward to hearing from you!

If you would like to provide even more information, we would love to invite you to take part in an interview with the project team. See more information at shape.monash.vic.gov.au/reusable-nappies

This project is supported by the Recycling Victoria Councils Fund, delivered by Sustainability Victoria on behalf of the Victorian Government.



APPLICATIONS OPEN FOR Monash Community Grants Program 2022/23

Applications for the 2022/23 round of the Monash Community Grants Program are open and close at 2pm, Thursday 3 March 2022.

More than \$2.5M is available to local community groups and organisations to support programs, services, projects and events that take place between 1 July 2022 and 30 June 2023.

For more info: [9518 3568](tel:95183568)

www.monash.vic.gov.au/community-grants

BE A RESPONSIBLE dog owner

Monash has both ‘on’ and ‘off’ leash dog areas, and as a dog owner, it is your responsibility to observe the regulations in these areas.

The owner (including a person having the care and/or control at the time) of a dog:

- » Must keep a dog on a chain, cord or leash held by the owner and attached to the dog when in a Public Place, except while in a Designated Off-leash Reserve
- » May exercise a dog off a chain, cord or leash in a Designated Off-leash Reserve if the owner
 - › Carries a chain, cord or leash no longer than 1.5m to bring the dog under control if the dog threatens any person or animal
 - › Does not allow the dog to worry, attack or otherwise threaten any person or animal.

If a dog is off a chain, cord or leash in a Designated Off-leash Reserve it must be on a leash, chain or cord if the dog is **within 20 metres** of:

- » An area or ground whilst being used for an organised sporting or practice event
- » A children’s play equipment area that is being used
- » The location of an organised public meeting
- » A barbecue or picnic area that is being used.

If a dog is in a Public Place that is not a Designated Off-leash Reserve or a Prohibited Place, the dog must be on a chain, cord or leash at all times.

For more info:

www.monash.vic.gov.au/dog-off-leash-areas



COMMUNITY SATISFACTION

Survey to start

A random sample of 800 Monash residents 18 and over will be contacted in the next few weeks to provide feedback on Council's service and performance.

The survey, by Metropolis Research, provides valuable information to Council about what we are doing well and how we can improve.

Council values the feedback from our community and encourages you to have your say.

Council has been made aware previously of people claiming to be making calls on behalf of City of Monash asking for personal or financial information. This is a scam/phishing call.

Never respond to unsolicited messages and calls that ask for personal or financial details.

For more info: contact Diana Bell ☎ 9518 3675 or www.monash.vic.gov.au/satisfaction-survey



PROGRESS PARK upgrade

Works to upgrade the Progress Park (Oakleigh South) playspace have started, with an anticipated completion in April 2022.

The exciting new playspace includes a junior play unit with slides, monkey bars, swing set, spinner, musical instruments and sensory garden beds. Bench seating, an accessible path and a picnic table will also be installed.

The bronze plaque that is currently placed on a brick pillar off Cameron Avenue will be relocated to the Southern entrance of Progress Park, off Pitt Street. The plaque acknowledges the work of Oakleigh City Council, the significant contribution of the Metropolitan Golf Club and the huge effort of the South Oakleigh District Progress Association in the development of the original playspace.

Cameron Avenue Reserve playspace is being constructed separately to minimise the disruption to the community and construction is scheduled to commence in March.

For more info: shape.monash.vic.gov.au/playspace/cameron-ave-progress-park

ARCHITECTS APPOINTED for Bogong Avenue car park

Planning and providing for some of the additional and replacement car parks required in the Glen Waverley Activity Centre (GWAC) is a step closer with architects, Katz Architecture who will be developing plans for the extension of the multi-level car park at Bogong Avenue.

Council is committed to providing additional, car parking spaces to residents and to support local businesses in the GWAC. Council has also been clear that it considers that the SRLA has a shared responsibility to provide for additional and replacement car spaces in the Activity Centre.

Council had identified land for redevelopment as a mixed-use multi-level car park at 31-39 Montclair Avenue, and had progressed feasibility and design work so that construction could have commenced.

Unfortunately, the Suburban Rail Loop Authority advised of its intention to acquire this site as the preferred location for the Suburban Rail Loop's Glen Waverley station. Council undertook alternative site investigations and identified an existing Council-owned multi-level car park at 1-5 Bogong Avenue as an alternative site for a car park.

It is expected that the Bogong Ave design will accommodate approximately 370 additional car spaces. A further 336 car spaces will need to be provided elsewhere in the GWAC and Council continues to work with the SRLA towards achieving this outcome. It is imperative that an acceptable and appropriate solution for these car spaces is found, and in particular that they are provided in an area where they are close to and easily accessible to the Kingsway spine, which is the heart of the Activity centre.

Design work for the Bogong Ave car park extension commenced earlier this month.

For more info: www.monash.vic.gov.au/bogong-carpark-extension
☎ 9518 3555



COUNCILLOR NEWS

Cr Tina Samardzija

One year has passed since I was elected to Monash Council and I am honoured to now serve as Deputy Mayor.

It has not been the smooth start to 2022 most of us were hoping for. The highly contagious Omicron variant of the coronavirus has touched many of our families and friends.

Council is no exception. Our staff and services have been placed under significant strain. I appreciate your understanding and patience as we work through this challenging time.

Thank you to those who have already or are soon to receive booster shots. And as school gets going again, our 5 to 11-year-olds can now get the vaccine. Council has been assisting the rollout of mobile vaccine options and emergency relief and support for vulnerable people in isolation.

Despite these challenges, it has been fantastic to see important local facilities being delivered such as the new Wellington Child and Family Hub in Mulgrave, and construction commence on the pavilion and improvements at Mulgrave Reserve and the expansion of Mulgrave Library.

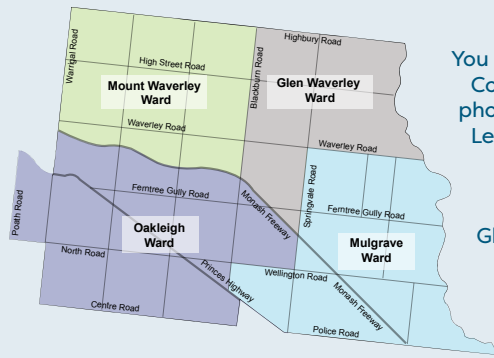
Just prior to Christmas I attended Council's on-site consultation for the playground upgrade at Rivett Crescent in Mulgrave. It was great to hear what the local families (kids included!) want to see in their local park. I'm pleased this project is underway after successfully fighting for the upgrade in this year's budget.

I've advocated for doing more on graffiti and maintenance since I joined Council. Instead of waiting for State Government and public utility bodies to clean their own assets, Council's Graffiti Pilot Removal Program trial will get on with cleaning up their graffiti, closely monitor for new graffiti and capture information about frequency and costs. We are also working on a more proactive approach to fix poor maintenance on State Government assets.

I also look forward to finalising Council's strategy on upgrading our local shopping strips. We know they're tired in some places and need sprucing up. I know improving local facilities and local amenity matters to our community, and I look forward to getting more things done in 2022.

Please contact me anytime if you have any queries or feedback on [0435 011 927](tel:0435011927) or tina.samardzija@monash.vic.gov.au

YOUR Councillors



You can contact Councillors via phone or email. Letters can be mailed to:

PO Box 1
Glen Waverley
VIC 3150

Glen Waverley Ward

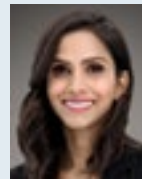


Cr Geoff Lake
0411 645 281
Geoff.Lake@monash.vic.gov.au



Cr Nicky Luo
0451 560 398
Nicky.Luo@monash.vic.gov.au

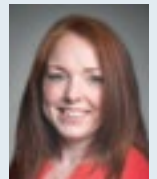
Mount Waverley Ward



Cr Anjalee de Silva
0424 679 096
Anjalee.deSilva@monash.vic.gov.au



Cr Brian Little
0407 878 033
Brian.Little@monash.vic.gov.au



Cr Rebecca Paterson
0437 959 163
Rebecca.Paterson@monash.vic.gov.au

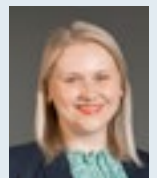
Mulgrave Ward



Cr Paul Klisaris
0412 516 026
Paul.Klisaris@monash.vic.gov.au



Cr Shane McCluskey
0466 345 406
Shane.McCluskey@monash.vic.gov.au



**Cr Tina Samardzija
Deputy Mayor**
0435 011 927
Tina.Samardzija@monash.vic.gov.au

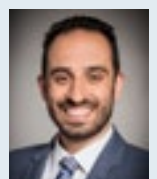
Oakleigh Ward



Cr Josh Fergeus
0466 465 421
Josh.Fergeus@monash.vic.gov.au



**Cr Stuart James
Mayor**
9518 3524 /
0413 184 250
Stuart.James@monash.vic.gov.au



Cr Theo Zographos
0430 316 911
Theo.Zographos@monash.vic.gov.au

HAVE YOUR SAY on LGBTIQ+ Action Plan

Council is committed to working together to celebrate diversity, promote social inclusion and raise the LGBTIQ+ community profile to help address equity, safety and access across Monash.

We are inviting LGBTIQ+ people as well as their friends, families and allies to share their experiences, concerns and priorities, to help us to inform our very first LGBTIQ+ Action Plan.

For more info:  shape.monash.vic.gov.au



Djirri Djirri, Wurundjeri women's dance group perform at 2021 Monash NAIDOC Week event.

NEW ARTS AND CULTURE Strategy underway

Play a part in the future of arts and culture for Monash and help us develop the Monash Arts and Culture Strategy 2025.

The Strategy will develop a vision supporting growth, recovery and celebration of creative and cultural industries, organisations and individuals, to inspire the Monash community.

Monash Council recognises that creative and cultural development increases our connection to place, and improves mental and physical wellbeing. Creative and cultural industries boost the local economy and create employment.

In the 2021 Monash Health and Wellbeing survey, 81% of the 375 respondents rated as important the benefits of arts and culture to mental health.


The Arts and Culture Strategy will provide a focus with clear actions to activate new and innovative projects based on data, to support community and commercial enterprises to flourish.

Untapped opportunities exist to collaborate on arts and cultural initiatives with the private sector.

The Strategy will:

- » Connect with the community and increase positive experiences through inspiration transformation and learning.
- » Support the arts and cultural industry to lead Monash through relief and recovery and strengthen community health and wellbeing outcomes.
- » Develop a whole of City vision that supports growth, recovery and celebration of creative and cultural industries, organisations and individuals
- » Consult with key external groups.

HAVE YOUR SAY on the Monash Arts and Culture Strategy 2025:

 shape.monash.vic.gov.au/arts-strategy

Survey is open until 20 March 2022.

For more info:  9518 3555

END GAMBLING

Harm After Dark


The risk of gambling harm from poker machines increases after dark. We know that the high levels of harm being experienced by people in the late hours of the night and early hours of the morning are avoidable.

In the month of July 2021, \$326,068 was lost every day to poker machines in the City of Monash. Gambling harm affects not just financial wellbeing but can impact relationships, mental health and issues with work or study. Harm from gambling affects everyone across the community.

In Victoria, all gaming venues must only operate for a maximum of 20 hours a day, with a four-hour break. However, each venue can individually decide what hours their poker machine rooms are closed. In Monash, access to a gaming venue in Monash is available 24 hours a day, faring worse than our neighbouring councils Greater Dandenong (23 hours) and Kingston (21 hours).

Sign the petition now calling for all pokies in Victoria to have a mandated, aligned closure from 2am to 6am.

For more info:

 www.pokiesplayyou.org.au/end_gambling_harm_after_dark



CLAYTON FESTIVAL

Friday 25 – Sunday 27
February 2022

This year Clayton Festival will be spread across three days, celebrating the fantastic food and culture that Clayton has to offer.

Hawkers Night Market
Friday 25 February
4pm-8pm

Clayton Festival begins with a food extravaganza. Visit the Food Truck Park for a bite and watch the cooking demonstrations near Clayton Train Station.

Food and Art Tours
Saturday 26 February
3pm-5pm

Make sure to book a ticket ahead for a unique food and art journey through Clayton, guided by local theatre groups.

Clayton Community Centre Day
Sunday 27 February
12pm-4pm

Enjoy live entertainment, roving performers and community activities and displays at the Clayton Community Centre carpark. Visit Chadstone Toyota's Enviro Tent that will share great education talks and activities on sustainability. Clayton Aquatics & Health Club will have free entry to the pool on the day, so bring your swimmers.

LIVE AT WARRAWEE

SATURDAY 19 MARCH
WARRAWEE PARK, OAKLEIGH
4PM-9PM

It's all about the fantastic line up of Australian artists, both established and up and coming - with Australian singer-songwriter, **Budjerah**, who was Nominated for 5 ARIA's and winner of the Michael Gudinski Breakthrough Artist award and a NIMA win for Best New Talent.

Pop duo act, **The Merindas**, comprising Candice Lorrae and Kristel Kickett will bring their infectious energy to the stage, along with Jazz band, **Orlando Combo**.

Get your family and friends, bring a chair or picnic rug, and watch the sun set over Warrawee Park while enjoying great music, delicious food trucks and a refreshing pop-up bar.

Please make sure to check the website for the latest information on events as COVID changes may cause cancellations.

For more info: ☎ 9518 3555

🌐 www.monash.vic.gov.au/festivals

VISIONS OF INDIA: from the colonial to the contemporary

Until 20 March

Since its invention, photography has played an integral role during Indian art history. While India is quoted as being the most photographed country in the world, the history of its representation is more complicated, and more political than initially meets the eye.

This exhibition begins its journey in 1860 before continuing through to the contemporary.

Visit MGA or take a virtual tour

🌐 www.mga.org.au

Free entry.

MGA:
860 Ferntree
Gully Rd,
Wheelers Hill

JOHNSTON &
HOFFMAN
Maharaja Sir
Bhagwati Prasad
Singh 1915
courtesy of the
Museum of Art
& Photography
(MAP) (Bengaluru)



POSITIVE AGEING Support

This program assists older residents to become actively engaged in the community and understand services and resources that are available relating to ageing and health. We provide assistance for residents facing language/financial/transportation barriers when accessing services and provide support with My Aged Care referrals. No bookings required.

Glen Waverley Library

Tuesdays, 1.30pm-3.30pm
1, 15 & 29 March

Oakleigh Library

Thursdays, 1.30pm-3.30pm
10 & 24 March and 7 April

For more info:

Kathy Evans

☎ 0409 332 525

✉ kathy.evans@monash.vic.gov.au

