


Tree Removals

The table below lists the details of the trees to be removed, including tree location, tree species and condition assessment. For further location details, please refer to the street map outlining all removals, replacements and infill planting. Alternatively, each tree has had a reference tag attached and these tags will correspond to the reference number below for on-site identification.

Ref No.	Street Address	Assessment Outcome	Follow Up Action	Current Tree Species	Tree Condition Assessment (*Useful Life Expectancy <2 Years)	Tree Image
1	2 Carlyle Street	Tree to be removed	Replacement tree to be planted	<i>Prunus sp.</i>	Poor vigour and some decay	
2	21 Carlyle Street	Tree to be removed	Replacement tree to be planted	<i>Prunus cerasifera Nigra</i>	Poor vigour, decay present	
3	28 Carlyle Street	Tree to be removed	Replacement tree to be planted	<i>Prunus sp.</i>	35cm trunk remaining only	

Ref No.	Street Address	Assessment Outcome	Follow Up Action	Current Tree Species	Tree Condition Assessment (*Useful Life Expectancy <2 Years)	Tree Image
4	29 Carlyle Street	Tree to be removed	Replacement tree to be planted	<i>Fraxinus augustifolia</i>	<80% foliage vigour and density	
5	34 Carlyle Street	Tree to be removed	Replacement tree to be planted	<i>Ligustrum lucidum</i>	Useful Life Expectancy <2 Years	
6	36 Carlyle Street	Tree to be removed	No replacement tree to be planted	<i>Koelreuteria paniculata</i>	Poor positioning for future appropriate growth	
7	38 Carlyle Street	Tree to be removed	Replacement tree to be planted	<i>Pittosporum undulatum</i>	Useful Life Expectancy <2 Years	

Ref No.	Street Address	Assessment Outcome	Follow Up Action	Current Tree Species	Tree Condition Assessment (*Useful Life Expectancy <2 Years)	Tree Image
8	43 Carlyle Street	Tree to be removed	Replacement tree to be planted	<i>Syzygium smithii</i>	Significant cambium dieback and decay in lower trunk	

Infill Planting Locations




The table below lists the details of the locations where trees will be planted in currently vacant sites along Carlyle Street, Ashwood. For further location details, please refer to the street map outlining all removals, replacements and infill planting.

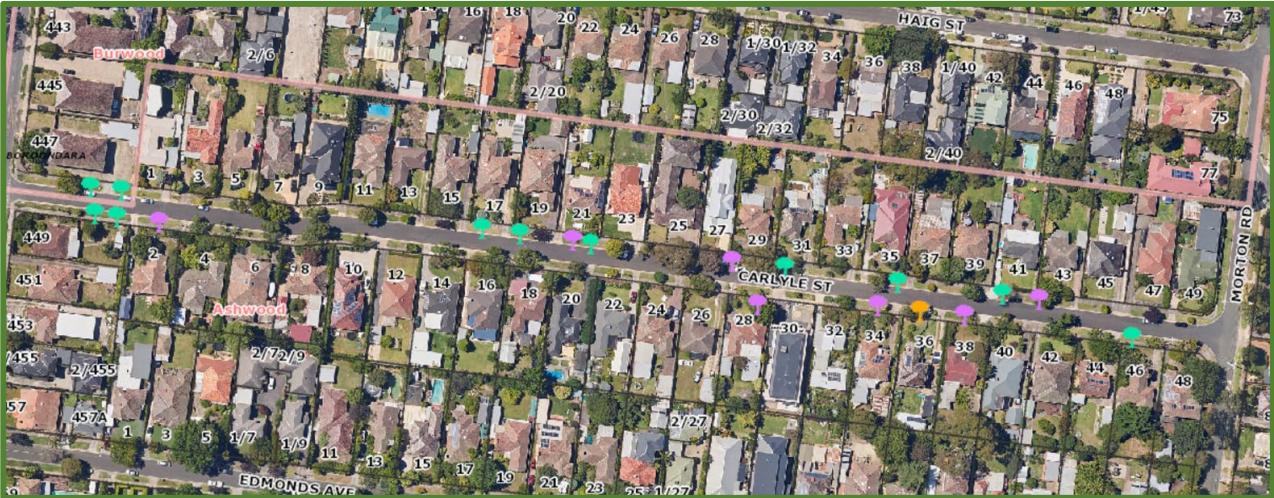
No.	Street Address	Assessment Outcome	Follow Up Action
1	17 Carlyle Street	Vacant Site	New tree to be planted
2	19 Carlyle Street	Vacant Site	New tree to be planted
3	21 Carlyle Street	Vacant Site	New tree to be planted
4	31 Carlyle Street	Vacant Site	New tree to be planted
5	35 Carlyle Street	Vacant Site	New tree to be planted
6	41 Carlyle Street	Vacant Site	New tree to be planted
7	46 Carlyle Street	Vacant Site	New tree to be planted
8	447 Warrigal Road	Vacant Site	New tree to be planted
9	447 Warrigal Road	Vacant Site	New tree to be planted
10	449 Warrigal Road	Vacant Site	New tree to be planted
11	449 Warrigal Road	Vacant Site	New tree to be planted

Street Overview

The map below details the removals, replacements and infill plantings. All other trees have been assessed as having more than two years' useful life and will be retained.

Street Overview Legend




-  Tree to be Removed and Replaced
-  New Tree
-  Tree Removed with No Replacement



Proposed Tree Species Options

Council’s Street Tree Strategy team has created three (3) options to choose from using the most appropriate species for the location.

Option 1 – Single species (both sides of the road)


<i>Tristaniopsis laurina</i> ‘Luscious’ (Luscious Kanooka)	
  	<p>An Australian native. Leaves are dark green, shiny and large. New growth starts in a distinctive copper colour and further interest appears over time with the branches developing deep purple coloured bark which peels back to reveal a smooth, cream trunk. Flowers are yellow and sweetly perfumed, appearing in clusters through summer.</p> <p>Mature Size</p> <p>Height x Width (m): 8 m x 4 m</p> <p>Form: Oval</p>

Option 2 – Combination of species


Power line side of road

<i>Cercis canadensis</i> 'Forest Pansy' (Forest Pansy Redbud)	
	<p>This small, attractive tree has spectacular heart-shaped, burgundy-coloured leaves that continually change colour throughout the year. A rich purple in spring, the foliage transforms to green over summer, followed by a multi-coloured autumn display in tones of red, apricot and gold. The branches have a distinctive, smooth, dark brown wood which contrasts well with the blossom-like pink flowers that are born before the re-emergence of leaves in spring.</p>
<p>Mature Size</p> <p>Height x Width (m): 5-7m x 5-7m</p> <p>Form: V Shape</p>	

Non-power line side of road

<i>Acer truncatum</i> x <i>platanoides</i> 'Taggart Sunset' (Truncatum Hybrid Maple)	
	<p>This very attractive small to medium-sized Maple has glossy, dark green, sharply lobed leaves, which change to a multitude of yellows, oranges and reds in autumn. Moderately fast growing, it is known to perform well in trying conditions. Flowers in late spring.</p>
<p>Mature Size</p> <p>Height x Width (m): 12-15m x 10m</p> <p>Form: Upright</p>	

Option 3 – Single species (both sides of the road)

<i>Corymbia citriodora</i> 'Scentuous' (Dwarf Scented Lemon Gum)	
	<p>This is a slightly narrow domed tree that doesn't shed its branches. It has a smooth trunk that may be slightly mottled. Leaves are narrow and highly aromatic when crushed, smelling strongly of lemon. This tree features lovely cream-coloured flowers in summer.</p>
	<p>Mature Size</p> <p>Height x Width (m): 7m x 3m</p> <p>Form: Oval</p>