

MONASH | AUGUST 2023

BULLETIN

MONASH LAUNCHES FIRST **RECONCILIATION ACTION PLAN**



INSIDE THIS ISSUE

- Bogong car park construction starting
- Major lighting upgrade
- New dog off-leash areas
- Award winning Playspace

Launch of Reconciliation Action Plan

Monash Council has launched its first **Innovate Reconciliation Action Plan (RAP)**, which will guide important work to empower First Nations voices within our community.

The RAP was launched on Monday 3 July, with a traditional Welcome to Country and Smoking Ceremony at Council's Civic Centre also marking the beginning of NAIDOC Week celebrations.

The RAP outlines work towards realising Council's vision for reconciliation by increasing equity, representation, and quality of life for Aboriginal and Torres Strait Islander communities and individuals in Monash.

Actions and deliverables of the RAP have been informed by extensive consultation with Traditional Owners, Aboriginal and Torres Strait Islander community members as well as Aboriginal organisations, Aboriginal peak bodies, the Monash Reconciliation Group, Councillors, Council officers, and our community.

Development has been guided by Reconciliation Australia's RAP framework and the Victorian Aboriginal and Local Government Strategy 2021-2026.

Stunning artwork by Indigenous artist, and proud descendant of the Karajarri people, Marcus Lee, will accompany the RAP. The artwork depicts Bunjil the Protector flying high over the City of Monash, keeping a watchful eye on its reconciliation

commitments, and will be rolled out across various Council assets.

Monash Mayor, Cr Tina Samardzija, affirmed Council's commitment to supporting the reconciliation process, saying the RAP articulates how Council will play its part in advancing reconciliation and contribute to greater unity within the Monash community.

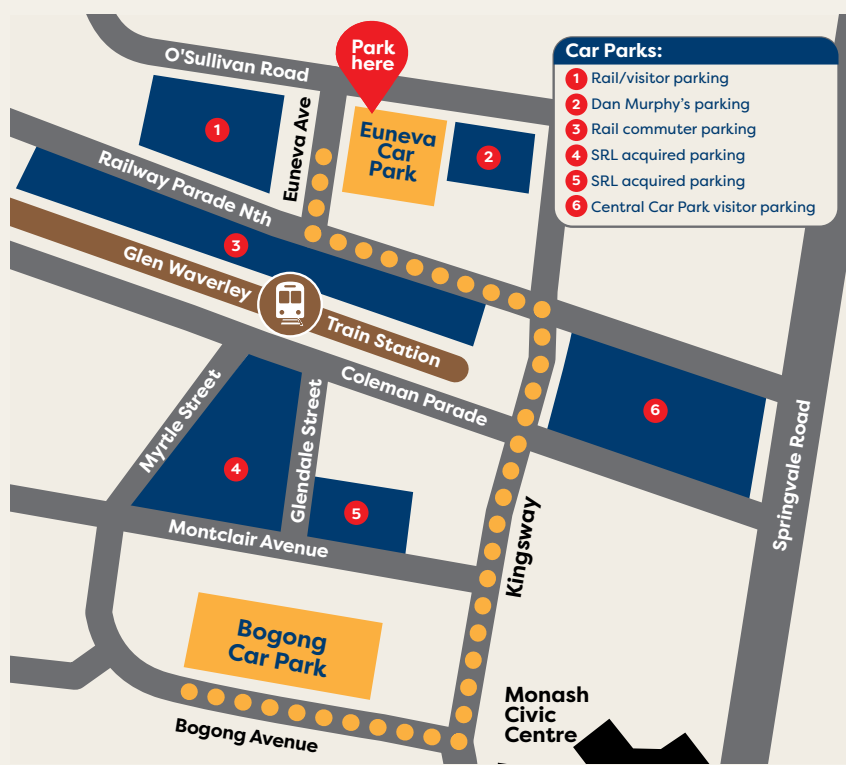
www.monash.vic.gov.au/Reconciliation-Action-Plan

Bogong car park construction starting

We're about to start construction of the extension to the multi-level car park in Bogong Avenue, delivering four additional floors and more than 500 new car parking spaces.

The existing car park will close for construction and we're urging shoppers, diners and visitors to Glen Waverley to make use of the Euneva Car Park, where there's more than 300 free car parking spaces, open 24 hours a day.

www.monash.vic.gov.au/bogong



Message from Mayor Cr Tina Samardzija



Council has resolved to submit for public consultation what would be Monash Council's largest and most expensive project. The proposed Glen Waverley Civic Precinct Project includes building a new Glen Waverley library, civic hall, and additional office space for Council staff.

At an expected cost of well over \$110 million, it is vital we hear from our community to understand your level of support for this proposed project.

We are also seeking your views on using the funding Council expects from the Suburban Rail Loop Authority's (SRLA's) compulsory acquisition of two council-owned sites, plus the sale of council's Central Carpark in Glen Waverley, towards funding the project.

My personal view is that, instead of spending the once-in-a-lifetime money we will receive from SRLA and the sale of Council's most valuable land parcel on one project, it could be better spent on infrastructure right throughout Monash.

For example, Glen Waverley library could be redeveloped in a far more modest and less expensive way so Council can also deliver other important and much-needed facilities. It can sometimes be easy to overlook the need to get smaller vital local infrastructure right.

But we need to hear from everyone in our community before we make any final decisions about going ahead with this Project and I encourage you to review the public information and provide your views about it.

You'll read in this issue about the launch of Monash Connects, a new program I'm proud to introduce that arose from discussions within our Multicultural Advisory Committee about how we can help migrant community groups learn from and connect with each other. As the daughter of migrants, I know how building those connections helps

families settle and thrive in our community.

Another important program we are supporting is the Shine Women's Health Program, encouraging women to get active and live healthy lives. This year we also delivered the program in Mandarin to help more women in the community access the information and support they need. We're grateful for our program partners Multicultural Centre for Women's Health, Women's Health East, miCARE and Diabetes Victoria.

You'll notice a few changes to this issue of the Bulletin – we wanted to give it a little refresh. Hope you like the new look, let us know what you think and whether you'd like to see any changes.

Please contact me anytime if you have any queries or feedback on Tina.Samardzija@monash.vic.gov.au or [0435 011 927](tel:0435011927)

Major lighting upgrade project

Guided by our Zero Net Carbon Action Plan, we are taking practical steps to cut greenhouse gas emissions, reduce energy costs, and help address climate change.

We are already sourcing 100 per cent renewable electricity for Council sites, saving more than \$660K in direct electricity costs last year, are upgrading our major facilities to be more energy efficient, and have commenced the upgrade of street lights in our community to further reduce greenhouse gas emissions and overall energy use.

Public lighting in Monash generates 17.6 per cent of all greenhouse gas emissions by Council.

Over the next year, around 2500 mercury vapour globes will be upgraded at our major road street lights. We are also progressing the upgrade of our residential street lights and lighting at our open spaces, car parks and parklands.

Upgrades will utilise low energy LED lighting technology, which is up to 82 per cent more energy efficient.

Switching to LEDs will increase lighting quality by directing more light towards the ground - where it is needed – rather than off into the night sky. This will improve road safety by more effectively illuminating roads and footpaths, making it easier for people to drive or walk at night. Better directed lighting will also minimise light spill into our bushland reserves, meaning birds and wildlife will be less impacted.

Up to 98 per cent of the components of the old lights removed from our major roads will be recycled for reuse. Glass collected will be recycled into products such as glass wool insulation for homes, while the metal aluminium body, steel screws and copper wires will be melted down and reused.

www.monash.vic.gov.au/zero-net-carbon

Community connection

‘You can learn a lot about someone when you share a meal together.’ That idea is at the heart of Monash Connects, a new program that brings together established and growing migrant community groups to share their stories and foster intercultural community connections.

Arising out of conversations with Council’s Multicultural Advisory Committee, Monash Connects will see Council working with key community organisations to host catered gatherings where different groups can learn from each other’s experiences of migrating to Monash.

The program was launched at a dinner with Monash’s Indian, Afghan and Ukrainian communities, which included presentations from

community leaders Judson Hamsa, Saied Rezawi and Oksana King, and a delicious spread of Indian, Ukrainian and Afghan dishes. More events are planned for August and October 2023 to facilitate further cultural understanding with other Monash-based cultural groups.

Learn more about Council’s diversity, inclusion and equity programs at: www.monash.vic.gov.au/diversity-inclusion

‘You can learn a lot about someone when you share a meal together.’

Have your say



Monash Connects: (from left) Saied Rezawi, Oksana King, Mayor Cr Tina Samardzija, Deputy Mayor Cr Nicky Luo and Judson Hamsa

Green bin change making a difference

It’s been 12 months since we introduced weekly collection for food and garden waste bins (green-lid bins). We know this was a significant change, but thanks to the community’s efforts, the results have also been significant.

Over the past year, we decreased the volume of material sent to landfill by more than 9000 tonnes. In that same time, the amount of food and garden waste sent to the compost facility increased by almost 8900 tonnes.

A detailed waste audit of 250 households’ bins also found that more than half of the food waste thrown out is being correctly disposed of in the green-lid bin. This

is more than double the amount of food waste in green-lid bins prior to the change.

Finally, a kerbside inspection of 21,000 green-lid bins found that approximately 90 per cent had the correct items inside.

IMPROVE YOUR FOOD AND GARDEN WASTE

When choosing compostable liners for your kitchen caddy, check the packaging features **both** of these two simple things:



- Must be labelled “compostable”
- Must have exact seedling logo.

www.monash.vic.gov.au/lining-your-caddy



Draft Monash Affordable Housing Strategy

The Monash Affordable Housing Strategy outlines Council’s vision of increasing affordable housing and improving housing affordability in Monash.

This strategy makes a clear case for taking action for greater affordable housing provision in the City of Monash. It demonstrates both the need for affordable housing and the benefits of having more affordable housing to the community and the economy of Monash. Increasing affordable housing keeps our communities diverse, lets people live closer to where they work and means people spend less on a roof over their heads and more in our businesses.



shape.monash.vic.gov.au

Submissions are due by **Friday 25 August**




Bridge renewal works in Notting Hill

We're about to start renewal works on the bridge in Duerdin Street, Notting Hill.

The bridge is nearing its end of life and its replacement is necessary for safety reasons and to avoid unplanned and lengthy closing of the street, which would severely impact commercial premises in the area. The renewal will include road pavement, footpath, drainage and associated reinstatement works.

We anticipate works will begin in early July and will be completed within three months, weather permitting.

In order to undertake these works, and provide a safe working environment during construction, Duerdin Street will be fully closed at the bridge for pedestrians and road traffic from early July until mid-October. Detours will be provided via Nantilla Road and Blackburn Road.

For any enquiries about this project please contact Mihai Florea  9518 3715


Repair Café gives items a new lease on life

Sustainable Monash recently hosted its inaugural Monash Repair Café, a collaboration between Monash Council, Waverley Woodworkers and the Glen Waverley Gem Club, at Central Reserve in Glen Waverley.

The Repair Café aimed to provide residents with the opportunity to repair small items, rather than replacing them or sending repairable items to landfill.

The event was a great success with many items repaired holding sentimental value for participants, including a WW2 era pewter chess piece, a 1970s toaster, a projector, a flip date clock and a child's toy.

Six volunteers were present on the day, with a variety of talents, including two robotics majors and a PhD scholar from Monash University, a member from the Environmental Advisory Committee and a volunteer who excelled in administration and registration of repairs.

 Connie.Lambe@monash.vic.gov.au

New dog off-leash areas

If you're looking for somewhere new for your dog to run off-leash, there are now 14 more spaces in Monash for them to stretch their legs.

With a total of 45 off-leash sites now across the City, there is plenty of space for your four-legged friend to get some exercise.

Dogs must still be under effective control when off-leash, and all dogs aged over three months must be microchipped and registered.

 For the list of sites and more info:
 www.monash.vic.gov.au/dogs-off-leash-areas





Notting Hill's lane of many colours

A bright burst of colour has transformed the pedestrian path between Samada Street and Saniky Street, thanks to Notting Hill Neighbourhood House's Community Laneways project.

Local residents have contributed more than 50 vibrant paintings to be displayed on the freshly painted fences bordering the laneway. The art project aims to give locals a chance to showcase their creativity while bringing a smile to the faces of passers-by.

Funded by a Council community grant, Notting Hill's newest community gallery was launched in October 2022, with the first paintings displayed in May. Notting Hill Neighbourhood House is currently taking expressions of interest on its website from people who would like to contribute a painting, as well as looking for volunteers to help maintain the project.

 <https://nottinghillnh.org.au/laneways>

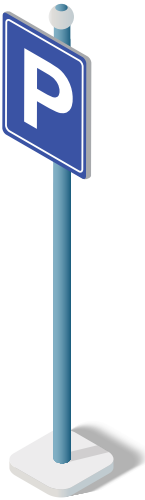
Better understanding parking habits

We are installing parking sensors at some of our activity centres, to assist in increasing fair parking turnover for activity centre users and businesses, as well as to gain a better understanding of parking habits.

Sensors will provide accurate and efficient detection of parking overstays, allowing us to better enforce parking restrictions. Importantly, parking officers will still be required to manually issue infringement notices – this will not be an automated process.

For more information about the sensors, including where they're installed across Monash and how we're using them:

 www.monash.vic.gov.au/parking




MONASH SENSORY playspace wins State award

Notting Hill's Westerfield Drive Sensory Playspace has taken top honours at the Parks and Leisure Australia 2023 Regional Awards of Excellence (Vic/Tas), winning the Playspace Award for playspaces under \$500,000.

Upgraded in 2022, with support from the Victorian Government, this unique, inclusive playspace features innovative play elements – such as an 8-key Marimba, sound bouncers and sensory trails – designed to help children develop their sensory skills. As part of the development, Council worked with Notting Hill Neighbourhood House to free up 500m² of public open space to increase the size of the playspace.

The upgrade to Westerfield Drive Playspace was identified as part of the Monash Playground and Playspace Strategy 2020. We're currently refreshing this strategy, to develop a 10-year playspace upgrade program commencing 2025/26, and want to hear your feedback.



You can share your ideas on Shape Monash until 27 August 2023:  shape.monash.vic.gov.au

Councillor news

Cr Stuart James



Gambling advertising in this country is out of control; we all know it. Australians spend more per capita on gambling than any other country in the world, and a staggering 40 per cent more than the second highest. When I was at university, the local pub was a place to have a beer, play a game of pool, eat a meal, watch a band. Nowadays, most bands and pool tables have been replaced with TAB screens, poker machines and flashing neon lights.

Council has never suggested that gambling be banned completely. It is a legal pastime that, for many, causes no significant problems; our stance is against advertising of gambling. Those that wish to gamble know exactly how and where to do so. Advertising serves no purpose other than to tempt people, and to target problem gamblers. We know from many studies and examples through our court system, that problem gambling has a profound effect on families and relationships and has led to family violence.

Whilst gambling is regulated by State and Federal Governments, Council can control who uses our land, and who receives ratepayer subsidies. When we consulted our community on our Public Health Approach to Gambling Harm Policy late last year, 96 per cent agreed that Council should *“protect children, young people and vulnerable members of our community by not allowing any forms of promotional material in relation to gambling where the community come to work, socialise or recreate on Council land”*. Accordingly, Council determined to not allow the use of public assets by, or give public funds to, organisations in Monash that advertise poker machine venues, sports betting or online gambling.

Staggeringly, the reaction of the board of one of the largest gaming venues in Monash, the Mulgrave Country Club (MCC), was to place a hold on all sponsorship agreements for community and sporting groups. According to the Victorian Gambling and Casino Control Commission, the MCC last year provided \$63,580 for sporting or recreational purposes, out of total income from gaming machines of \$12.8 million dollars, less than 0.5 per cent. Their income from gaming machines represents more than 10 per cent of Council’s entire budget for the year.

It is staggering that a club that claims to be a “grass roots community club” would act in such a vindictive manner, simply because it will no longer receive free advertising and promotion of its activities to children through our local sporting organisations.

Gambling advertising needs to be banned, just as it was with cigarettes in the 90s. I am proud that Monash is leading the way on reform in this area.

Next Council Meeting

Tuesday 29 August, 7pm

Monash Civic Centre, 293 Springvale Rd, Glen Waverley

Attend the meeting in-person or watch it live:

[webcast.monash.vic.gov.au](http://www.monash.vic.gov.au)

Meeting agenda and most up-to-date info:

www.monash.vic.gov.au/meetings

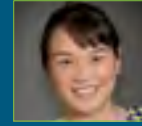
Your councillors

Glen Waverley Ward



Cr Geoff Lake

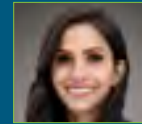
0411 645 281
Geoff.Lake@monash.vic.gov.au



Cr Nicky Luo | Deputy Mayor

0451 560 398
Nicky.Luo@monash.vic.gov.au

Mount Waverley Ward



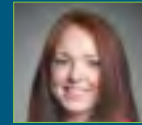
Cr Anjalee de Silva

0424 679 096
Anjalee.deSilva@monash.vic.gov.au



Cr Brian Little

0407 878 033
Brian.Little@monash.vic.gov.au



Cr Rebecca Paterson

0437 959 163
Rebecca.Paterson@monash.vic.gov.au

Mulgrave Ward



Cr Paul Klisaris

0412 516 026
Paul.Klisaris@monash.vic.gov.au



Cr Shane McCluskey

0466 345 406
Shane.McCluskey@monash.vic.gov.au



Cr Tina Samardzija | Mayor

9518 3524 | 0435 011 927
Tina.Samardzija@monash.vic.gov.au

Oakleigh Ward



Cr Josh Fergeus

0466 465 421
Josh.Fergeus@monash.vic.gov.au



Cr Stuart James

0413 184 250
Stuart.James@monash.vic.gov.au



Cr Theo Zographos

0430 316 911
Theo.Zographos@monash.vic.gov.au

You can contact Councillors via phone or email. Letters can be mailed to:
PO Box 1, Glen Waverley, VIC 3150
www.monash.vic.gov.au/Councillors



WHAT'S ON

9 AUG

7pm – 8.30pm

CREATING HABITAT for Pollinators Workshop



Discover how you can support the survival of pollinators by creating habitats for them at home, school or work. Helen, from *Friends with Honey*, will explain how to create pollinator-friendly hotels in your garden, identify pollinator species, and help them to thrive.

IN-PERSON AND ONLINE:

📍 Monash Civic Centre
293 Springvale Rd, Glen Waverley

TO BOOK:



🌐 www.monash.vic.gov.au/pollinator-habitat
📞 9518 3555

25 JULY

ANYONE CAN DROWN, no-one should

We're joining cities around the world in marking the third annual World Drowning Prevention Day. The event highlights the tragic and profound impact of drowning on families and communities.



To mark the day, Active Monash will conduct a pop up featuring important water safety messaging at M-City Shopping Centre.

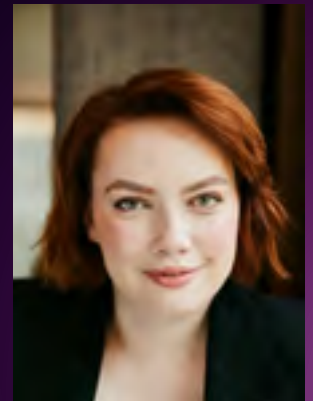
🌐 www.royallifesaving.com.au
🌐 www.activemonash.vic.gov.au/learn-to-swim

13 SEPT

11.30am - 2pm

MONASH WOMEN'S Business Network

Hear Elly Demarchelier, a fierce advocate for disability rights and a proud disabled woman, share the many benefits of employing a person with a disability, which can bring valuable skills and a new perspective to your business.



LOCATION: 📍 Riversdale Golf Club, 200-280 Huntingdale Rd, Mt Waverley

COST: \$60 per person for a two-course lunch

TO BOOK:

🌐 www.trybooking.com/CJJOK

RSVP: Monday 4 September

Held until **10 SEPT**

ZAHALKAWORLD an artist's archive



Imaginative, immersive and playful, this exhibition invites audiences into Anne Zahalka's working life and her creative process to explore the illusionary worlds for which she is renowned.

📍 MAPH, 860 Ferntree Gully Rd
Wheelers Hill

🌐 www.maph.org.au

Anne ZAHALKA *The Bathers* 1989; from the series *Bondi: Playground of the Pacific*; MAPH, City of Monash Collection

SNAP SEND SOLVE is a great app to report to us what needs fixing:



🌐 www.monash.vic.gov.au/snap-send-solve

Contact us



📍 Mon to Fri, 8.30am to 5pm
Monash Civic Centre 📍 293 Springvale Rd, Glen Waverley, 3150
Oakleigh Service Centre 📍 3 Atherton Rd, Oakleigh, 3166
 📞 9518 3555 🌐 www.monash.vic.gov.au ✉️ mail@monash.vic.gov.au
For text version of the Bulletin: 🌐 www.monash.vic.gov.au/news
We welcome your feedback: ✉️ mail@monash.vic.gov.au

Monash Council acknowledges the Traditional Owners of the land that makes up Monash, the Wurundjeri Woi Wurrung and Bunurong People, and recognises their continuing connection to the land and waterways. We pay our respects to their Elders past, present and emerging and extend this to all Aboriginal and Torres Strait Islander People.



Copyright © 2023 Monash City Council. All Rights Reserved; reproduction in any form will require Council's written approval.
 Information in the August Bulletin is current at the time of going to print on 3 July 2023.

Monash Interpreter Service

普通话	4713 5001	සිංහල	4713 5020
廣東話	4713 5002	தமிழ்	4713 5021
Viet Ngữ	4713 5003	Other languages	4713 5000
Ελληνικά	4713 5004		
हिंदी	4713 5005		
Italiano	4713 5008		
한국어	4713 5010		

